

CAMP *1* ONAR *1* O



ACQUISTO CAMPIONARIO / PURCHASE OF CAMPIONARIO



Box completo / Complete box
€270,00+IVA



Campione singolo / Single sample
€4,50

Puoi ordinare qualsiasi campione presente a catalogo, eccetto per il vetro.
All samples in this catalogue are available for purchase, except for the glass.

IGIENIZZANTE PER TESSUTI IDROREPELENTE / FABRIC SANITIZER WATER REPELLENT



Hydrise
€39,00

Hydrise è un prodotto per tessuti a doppia azione, igienizzante e idrorepellente, con una percentuale di alcol incolore maggiore del 70%. Indicato per igienizzare e proteggere divani, sedie, tende, tappeti, indumenti e mascherine dal proliferare di virus, batteri e muffe. L'uso è consigliato in locali pubblici ad alta frequentazione come alberghi, ristoranti, bar, cinema, case di cura, scuole.

Hydrise is a dual-purpose product for fabrics, sanitizing and water repellent, with a percentage of colorless alcohol higher than 70%. It's suitable for sanitizing and protecting sofas, chairs, curtains, rugs, clothing and masks from the proliferation of viruses, bacteria and molds. It's recommended in high-traffic spaces such as hotels, restaurants, bars, cinemas, nursing homes, schools.

INDEX

- 4** **LEGNO**
/ **WOOD**

- 8** **SUPERFICI**
/ **SURFACES**

- 12** **VETRO**
/ **GLASS**

- 14** **FINITURE**
/ **FINISHES**

- 18** **PAGLIA**
/ **STRAW**

- 20** **CERAMICA**
/ **CERAMIC**

- 21** **FENIX**

- 22** **LACCATI**
/ **LACQUER**

- 24** **POLIPROPILENE**
/ **POLYPROPYLENE**

- 25** **CUOIO**
/ **LEATHER**

- 26** **TESSUTI**
/ **TEXTILES**

- 50** **MANTENIMENTO E PULIZIA**
/ **CLEANING AND MAINTENANCE**



ROVERE FIAMMATO
FLAMED OAK



NOCE CANALETTO
CANALETTO WALNUT



FRASSINO
ASH

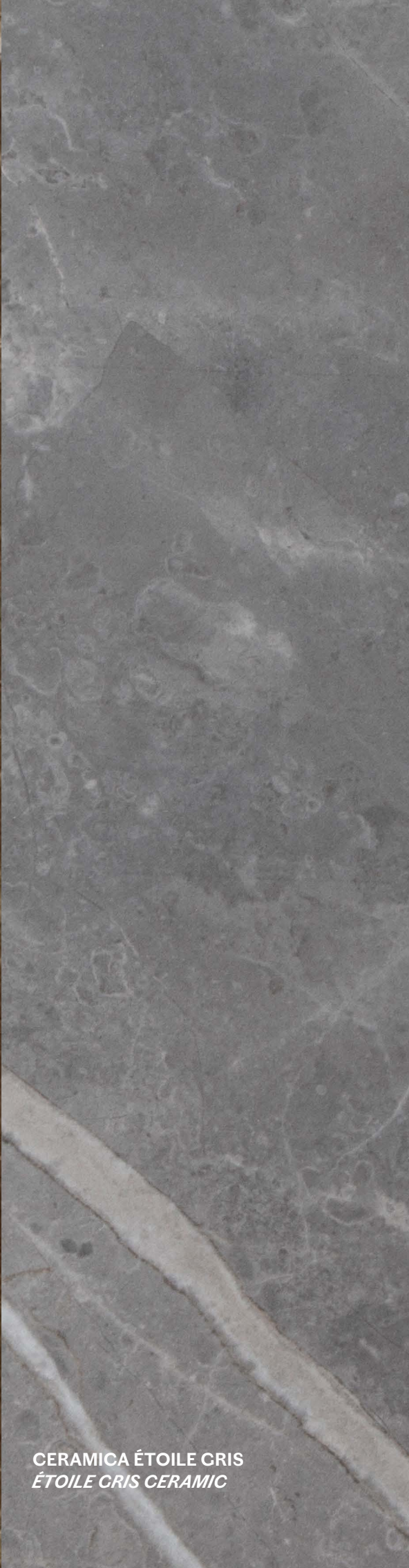
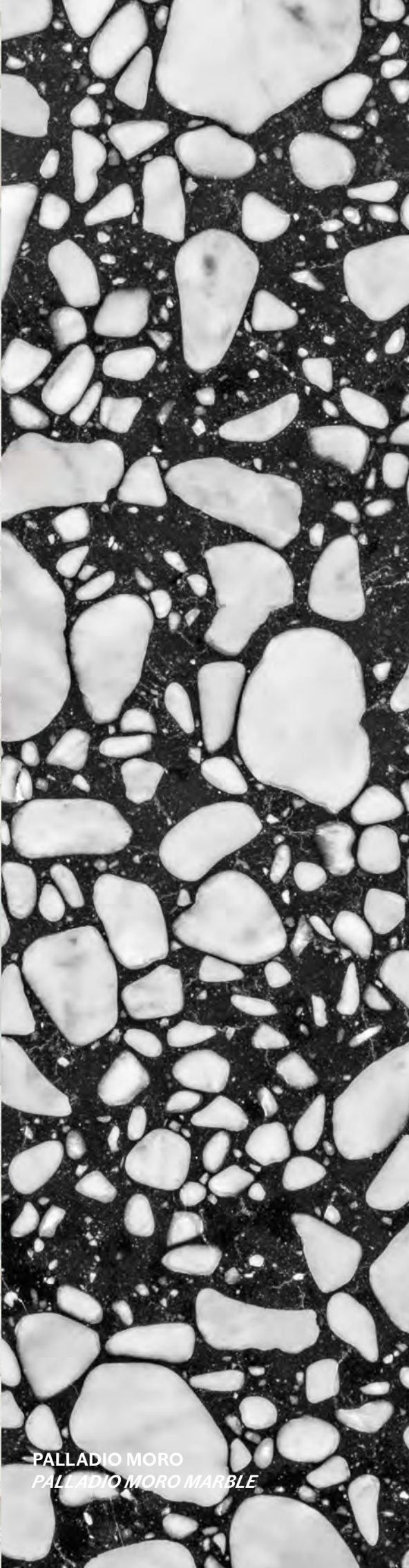
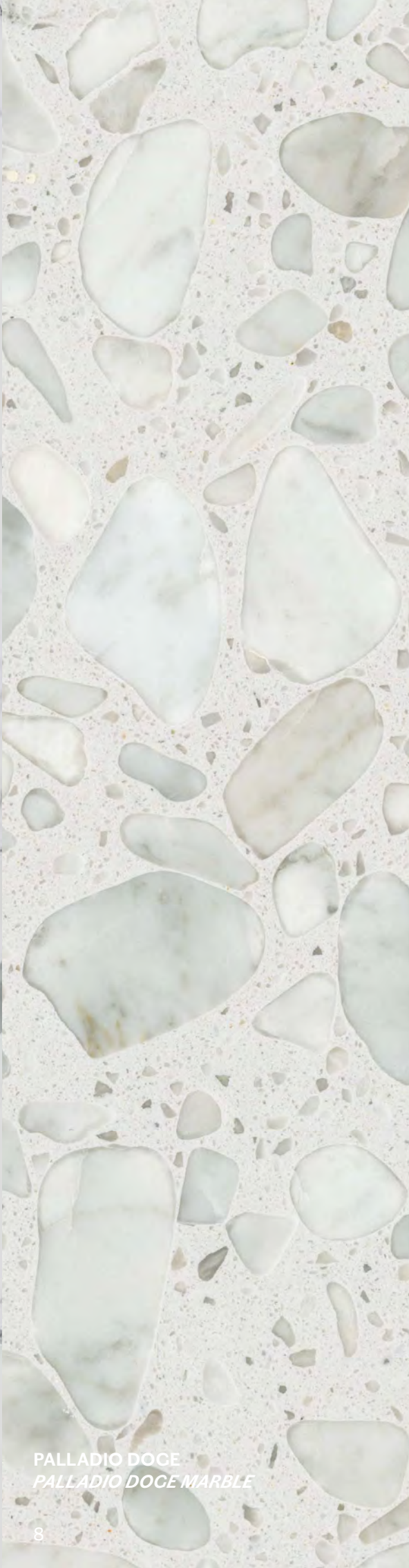
TINTO ROVERE
STAINED OAK

ROVERE VINTAGE
VINTAGE OAK

TINTO NOCE
STAINED WALNUT

ROVERE TERMOTRATTATO
HEAT-TREATED OAK

FRASSINO NERO
BLACK ASH



CERAMICA BIANCO STATUARIO
STATUARIO WHITE CERAMIC

PALLADIO DOGE
PALLADIO DOGE MARBLE

PALLADIO MORO
PALLADIO MORO MARBLE

CERAMICA THUNDERNIGHT
THUNDERNIGHT CERAMIC

CERAMICA EMPERADOR
EMPERADOR CERAMIC

CERAMICA ÉTOILE GRIS
ÉTOILE GRIS CERAMIC





VETRO SOFFIATO AMBRA
AMBER BLOWN GLASS

VETRO SOFFIATO PETROLIO
PETROL BLOWN GLASS

VETRO SOFFIATO BLU
BLUE BLOWN GLASS

VETRO SOFFIATO AMETISTA
AMETHYST BLOWN GLASS

VETRO SOFFIATO GRIGIO
SMOKED GREY BLOWN GLASS

VETRO GRIGIO EUROPA
EUROPE GREY GLASS



RAME
COPPER

ORO ROSA OPACO
ROSE GOLD MATT

BRONZATO
BRONZE

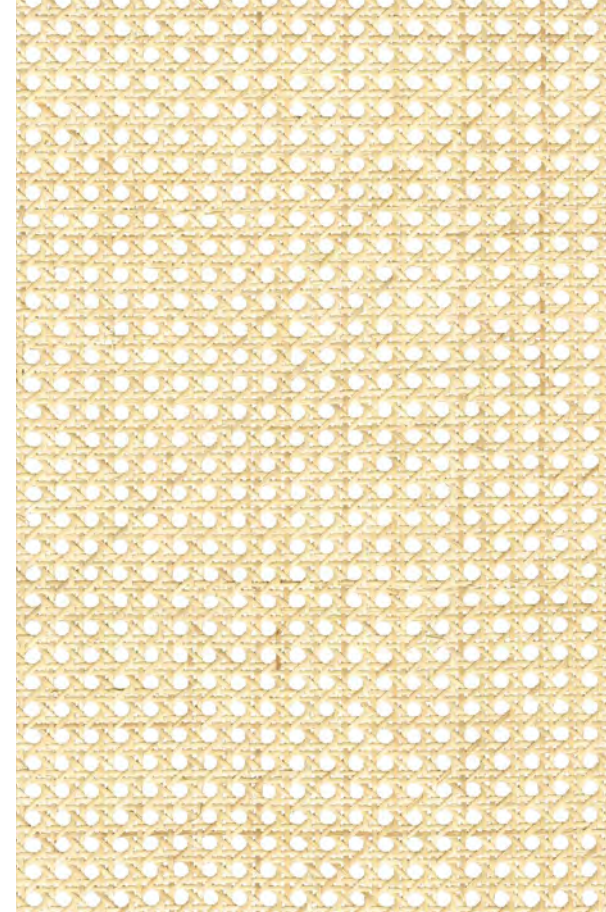
CALCESTRUZZO
CONCRETE

METALLO ZINCATO
ZINC-COATED METAL

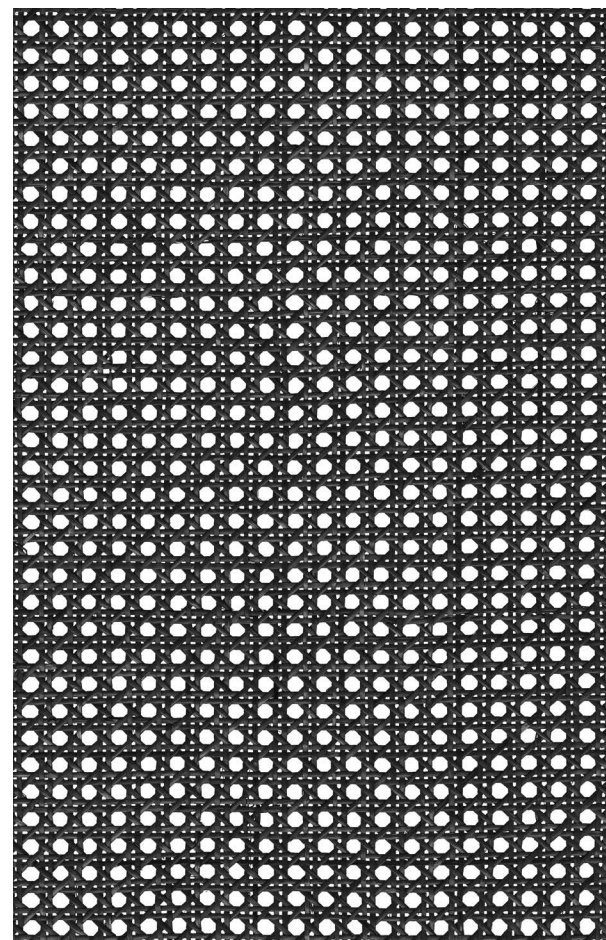




PAGLIA DI FIUME
TRADITIONAL STRAW



PAGLIA DI VIENNA NATURALE
NATURAL VIENNA STRAW



PAGLIA DI VIENNA NERA
BLACK VIENNA STRAW

Antracite
RAL: 7016



Oro



Rame



Pompei
NCS: 4550-Y70R



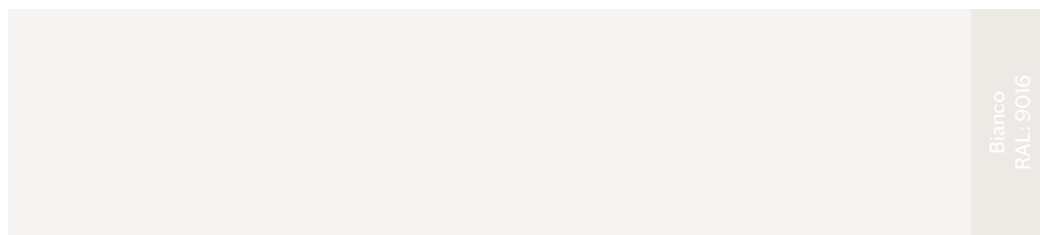
Bloody Mary
NCS: 4550-Y80R



Bisanzio
NCS: 6030-B



Grigio Finestra
RAL: 7040



Bianco
RAL: 9016



Crema

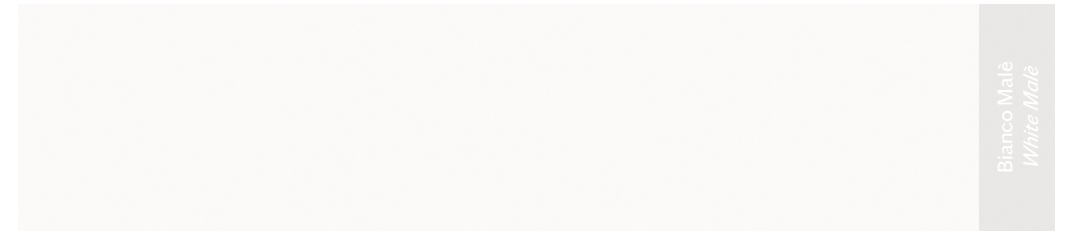


Terracotta



Peltro

Grigio Efeso
Efeso Grey



Bianco Matè
White Matè



Grigio Londra
London Grey



Nero
Black

CERAMICA
CERAMIC



Qualità / Qualities

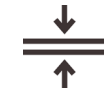
Materiale naturale e igienico, finitura opaca o smaltata, resistente, durevole, facile da pulire
Natural and hygienic material, matte or glazed finish, hardness, long-lasting, easy-to-clean



Sostenibilità / Sustainability

Soluzione sostenibile e riciclabile
Eco-friendly and recyclable solution

FENIX



Spessore / Thickness
0,9 mm

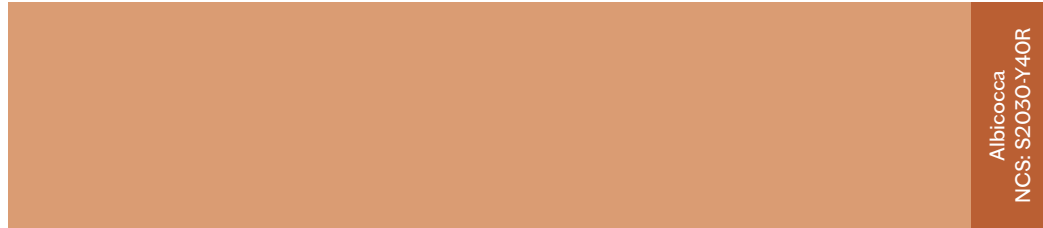


Resistenza / Resistance
Muffa, strofinamento
Mould, rubbing



Qualità / Qualities
Igienico, facile da pulire, antistatico, idrorepellente, stabile alla luce
Hygienic material, easy-to-clean, antistatic, water-repellent, low light reflectivity

Bisanzio
NCS: 6030-B



Albicocca
NCS: S2030-Y40R



Pompei
NCS: 4550-Y70R



Bloody Mary
NCS: 4550-Y80R



Visone
NCS: 6010-Y60R



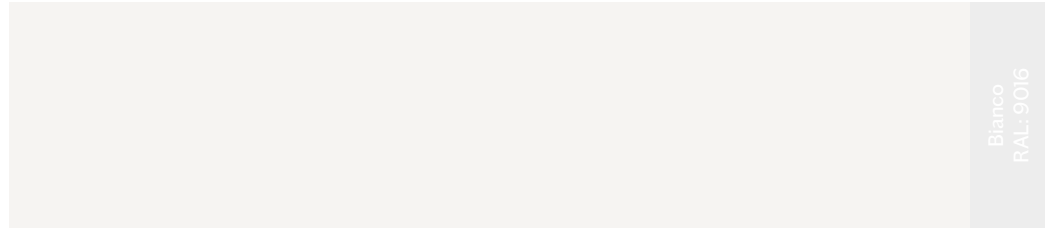
Grigio Polvere
RAL: 7037



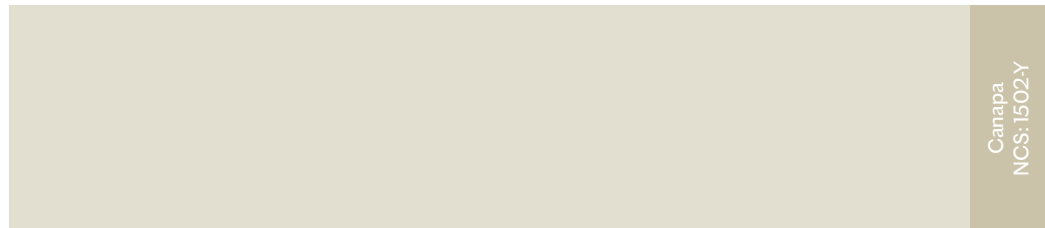
Antracite
RAL: 7016



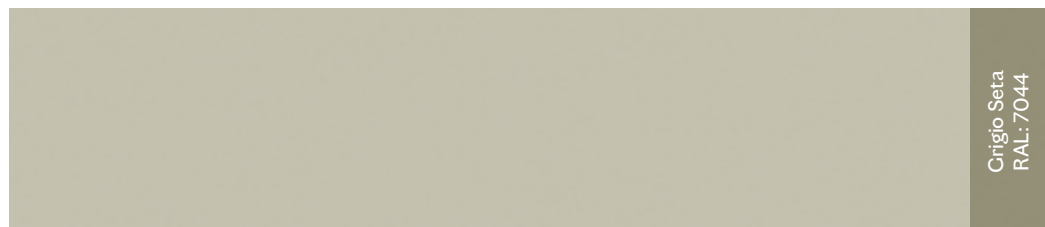
Nero
RAL: 9005



Bianco
RAL: 9016



Canapa
NCS: 1502-Y



Grigio Seta
RAL: 7044



New Juta
NCS: 3010-Y30R

LACCATI
LACQUER



Qualità / Qualities

Superficie liscia o micro-goffrata,
estetica uniforme, colori profondi,
finitura matt, uso versatile, semplice
da pulire

*Smooth or rugged surface, uniform
appearance, deep colours, matt finish,
versatile use, easy-to-clean*

Albicocca
NCS: S2030-Y40R



Grigio Seta
RAL: 7044



Rosso Marsala
NCS: S4040R



Blu Intenso
NCS: S-6020 R-80B



Antracite
RAL: 7016

POLIPROPILENE POLYPROPYLENE



Resistenza / Resistance

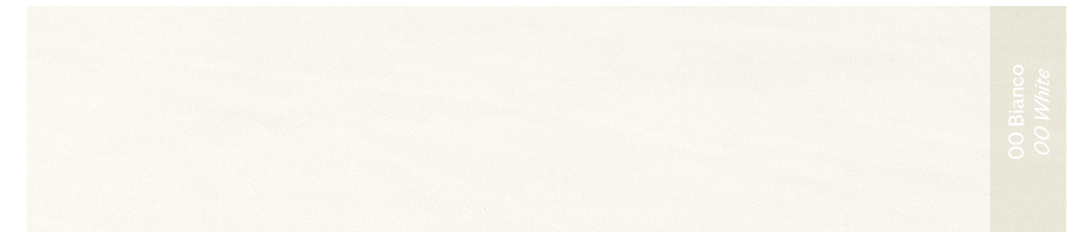
Carico di rottura, abrasioni, acqua, graffi, temperature estreme
Strength tested, abrasions, water, scratches, extreme temperature



Qualità / Qualities

Superficie opaca, grana materica, adatto per indoor e outdoor
Matt-rugged surface, suitable both for indoor and outdoor

Cuoio Naturale
Natural Leather



00 Bianco
00 White



02 Avorio
02 Ivory



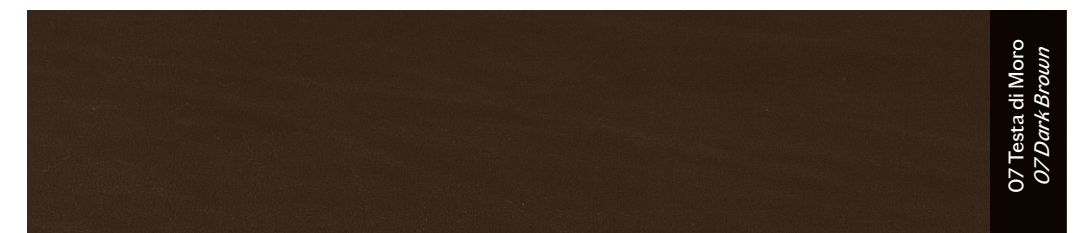
06 Tortora
06 Dove Grey



03 Rosso
03 Red



08 Vinaccia
08 Burgundy Red



07 Testa di Moro
07 Dark Brown



01 Nero
01 Black

CUOIO LEATHER



Composizione / Composition

100% Pelle bovina / Bovine leather



Spessore / Thickness

1,4-2 mm



Resistenza / Resistance

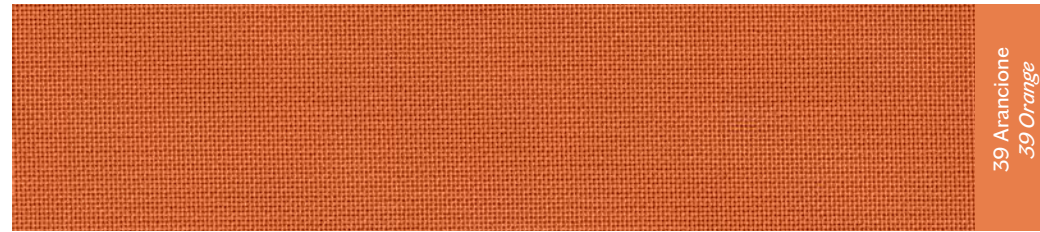
Usura, acqua, abrasioni
Wear, water, abrasion



Qualità / Qualities

Superficie liscia e pulita, robusto e resistente, adatto ad un uso quotidiano, semplice da pulire
Smooth and clean surface, firm and resistant, suitable for everyday use, easy-to-clean

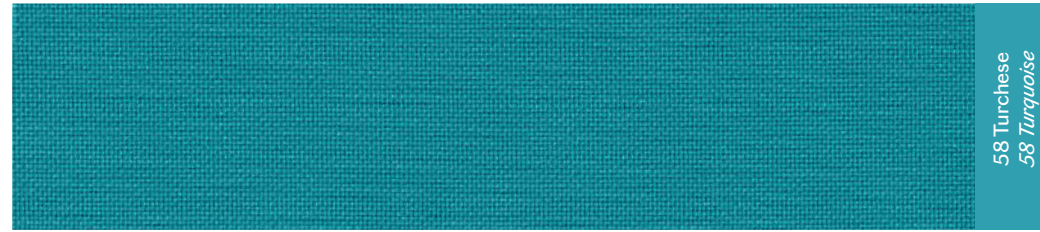
36 Grigio Fumo
36 Smoke Grey



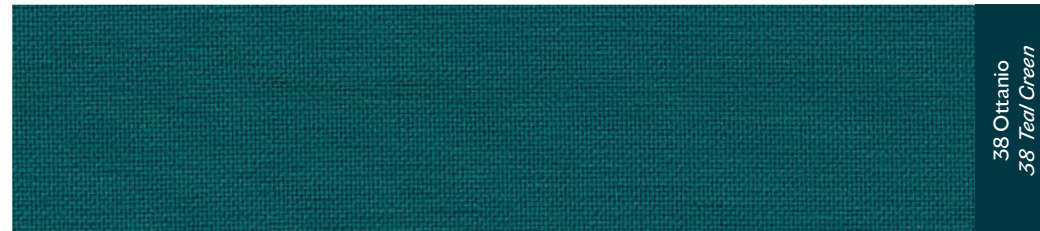
39 Arancione
39 Orange



08 Lime
08 Lime



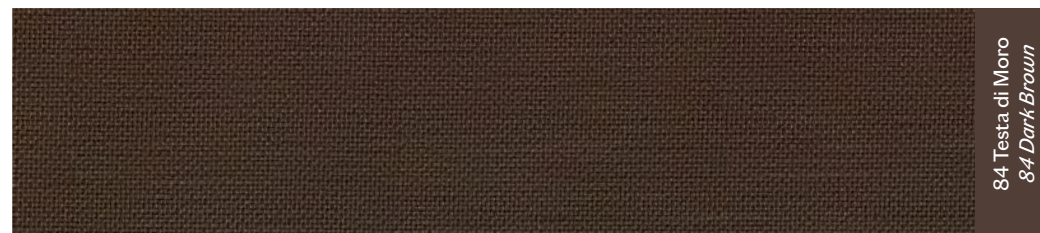
58 Turchese
58 Turquoise



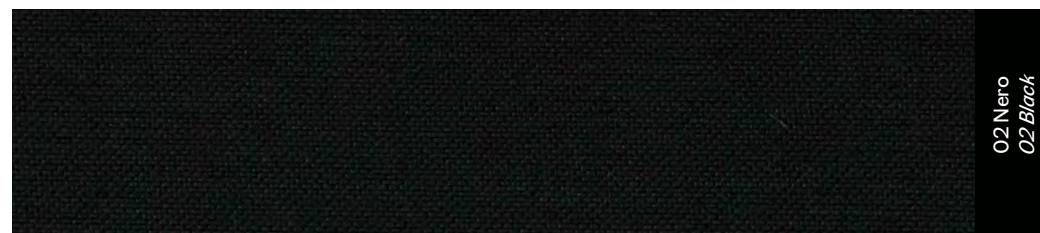
38 Otanio
38 Teal Green



27 Blu Scuro
27 Dark Blue



84 Testa di Moro
84 Dark Brown



02 Nero
02 Black



14 Avorio
14 Ivory

LOOP



Composizione / Composition
100% Poliestere / Polyester PL



Peso / Weight
280 gr/m²



Martindale
100.000
EN ISO 12947-1
EN ISO 12947-2



Infiammabilità / Flammability
BS 5852 source 0
DIN EN 1021-1



Idrorepellente / Water repellent



538 Menta
538 Mint

MADRID



Composizione / Composition
100% Polipropilene / Polypropylene PP



Peso / Weight
250 g/m²



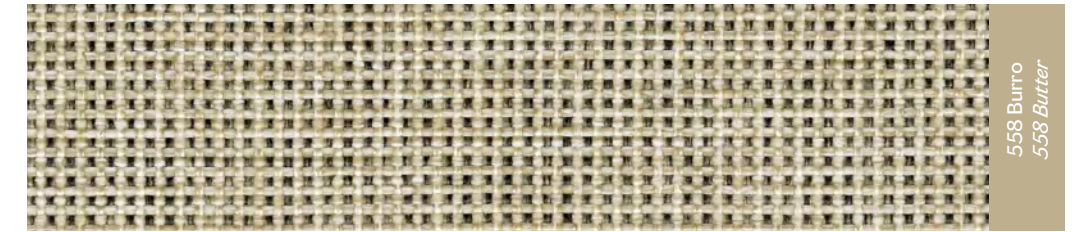
Martindale
100.000
EN ISO 12947-2



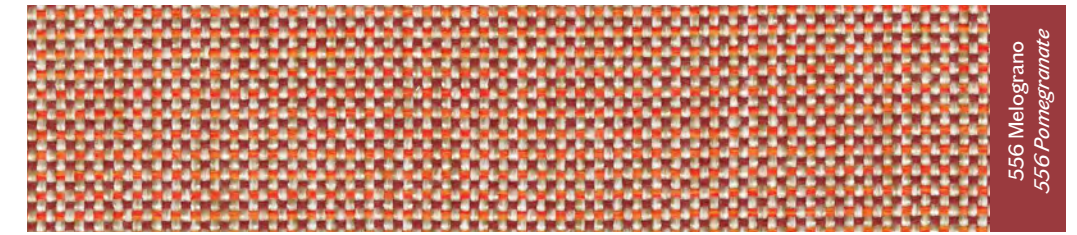
Infiammabilità / Flammability
1 IM UNI 9175 • BS EN 1021-1:2006 •
BS EN 1021-2:2006 • BS 5852:2006
CRIB 5 • CAL TB 117:2013 • IMO -
2010 FTP CODE



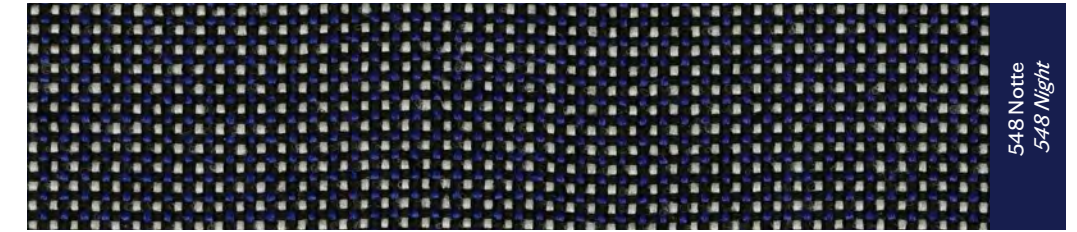
Sostenibilità / Sustainability
OEKO-TEX



558 Burro
558 Butter



556 Melograno
556 Pomegranate



548 Notte
548 Night

25 Senape
25 Mustard



39 Arancio
39 Orange



38 Mela
38 Apple



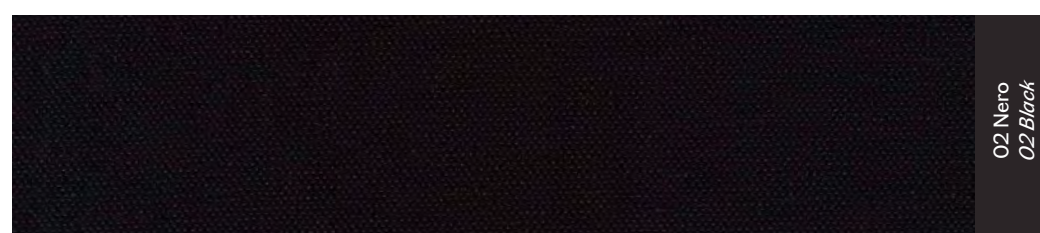
57 Pavone
57 Peacock



37 Blu Elettrico
37 Electric Blue



64 Grigio Scuro
64 Dark Grey



02 Nero
02 Black



34 Tortora
34 Dove Grey



04 Beige

TRAMÈ



Composizione / Composition
100% Poliestere / Polyester PL
con trattamento ritardante di fiamma
with flame retardant treatment



Peso / Weight
350 gr/m²



Martindale
100.000

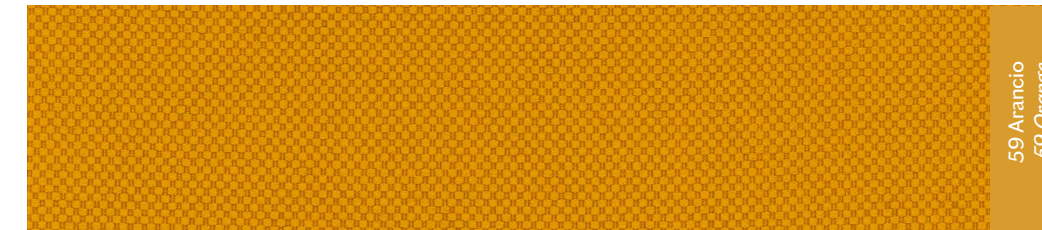


Infiammabilità / Flammability
BS 5852 source 0 (without soaking)
CAL TB 117:2013



Idrorepellente / Water repellent

57 Marrone
57 Brown



59 Arancio
59 Orange



54 Rosso
54 Red



03 Marmellata
03 Jam



69 Blu Notte
69 Midnight Blue



53 Grigio Chiaro
53 Light Grey

SALÒ



Composizione / Composition
100% Poliestere / Polyester PL
con trattamento ritardante di fiamma
with flame retardant treatment



Peso / Weight
380 gr/m²



Martindale
100.000
EN ISO 12947-2

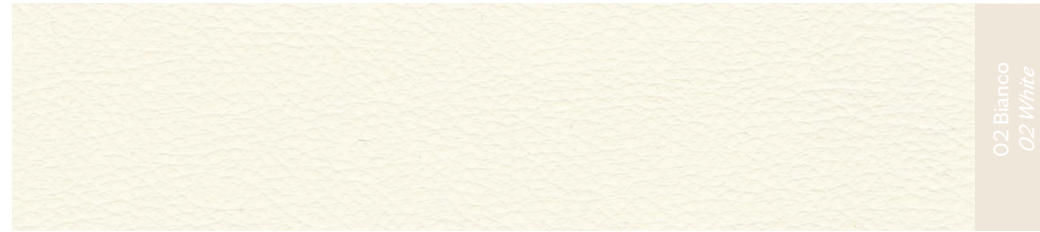


Infiammabilità / Flammability
1 IM UNI 9175 • BS 5852:Part 1:1979
• BS EN 1021-1:2006 • BS EN 1021-
2:2006 • BS 5852:2006 (Crib 5)
• CAL TB 117:2013 • IMO - 2010 FTP
CODE • DIN 4102-1 (May 1998) • MI



Sostenibilità / Sustainability
OEKO-TEX

26 Avorio
26 Ivory



02 Bianco
02 White



35 Rosso
35 Red



16 Testa di Moro
16 Dark Brown



08 Nero
08 Black



06 Grigio Scuro
06 Dark Grey



14 Tortora
14 Dove Grey

FLUKSO BLOOM ECOLEATHER



Composizione / Composition
85% PVC
15% Poliestere / Polyester PL



Peso / Weight
550 gr/m²



Martindale
50.000
UNI EN ISO 5470-2



Infiammabilità / Flammability
TB 117:2013



**Idrorepellente / Water repellent
e facile da pulire / and easy-to-clean**

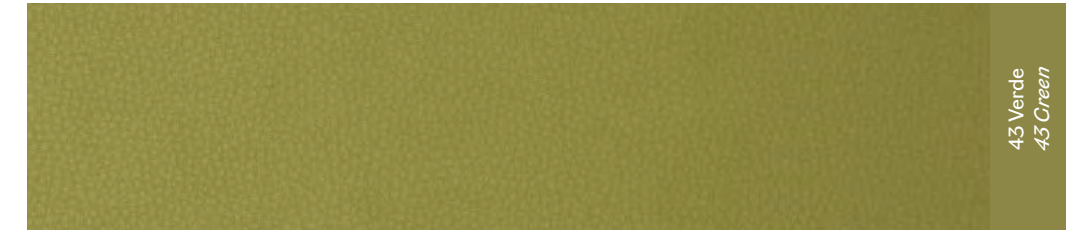
11 Pesca
11 Peach



14 Nocciola
14 Hazelnut



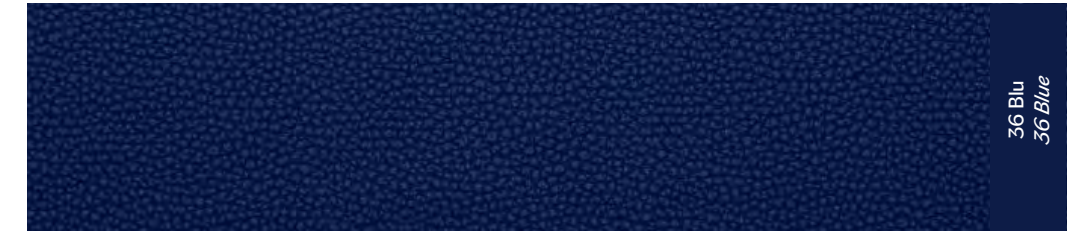
15 Mattone
15 Brick



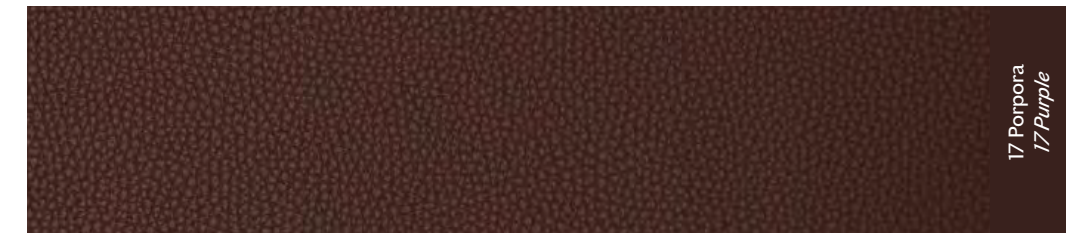
43 Verde
43 Green



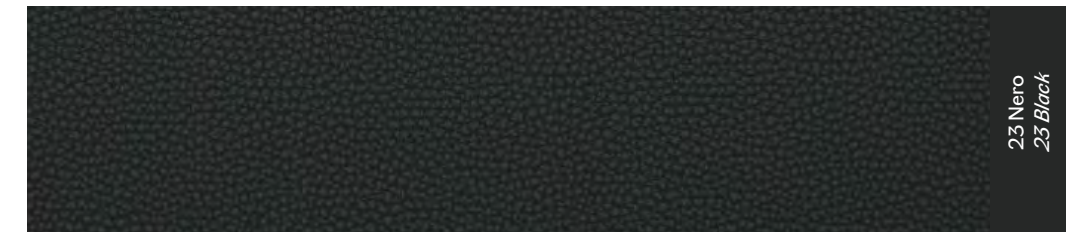
22 Nuvoloso
22 Cloudy



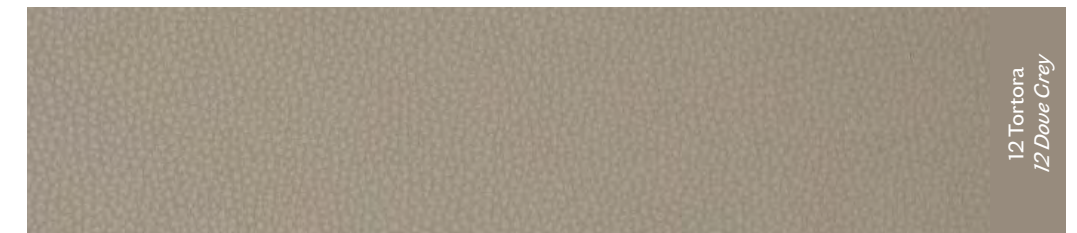
36 Blu
36 Blue



17 Porpora
17 Purple



23 Nero
23 Black



12 Tortora
12 Dove Grey

FLUKSO PLATINUM



Composizione / Composition
82% PVC
18% Poliestere / Polyester PL



Peso / Weight
650 gr/m²



Martindale
100.000
UNI EN ISO 5470-2



Infiammabilità / Flammability
UNI 9175 classe IIM • EN 1021-1 • EN 1021-2 • BS 5852-1 cigarette test • BS 5852-1 match test • DIN 4102 B2 • IMO FTP CODE 2010



Sostenibilità / Sustainability
No ftalati / Phthalates free

03 Seppia
03 Sepia



02 Nocciola
02 Light Brown



04 Marrone
04 Brown

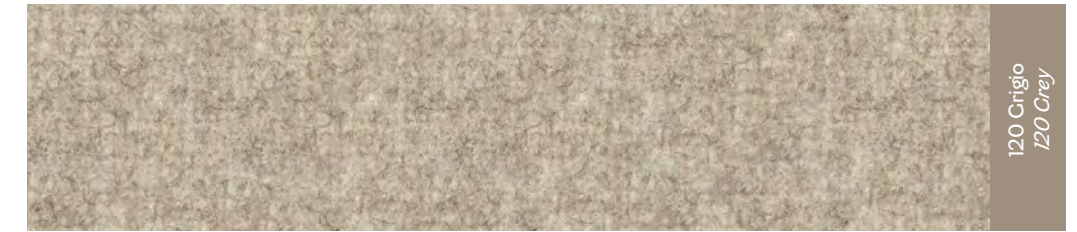
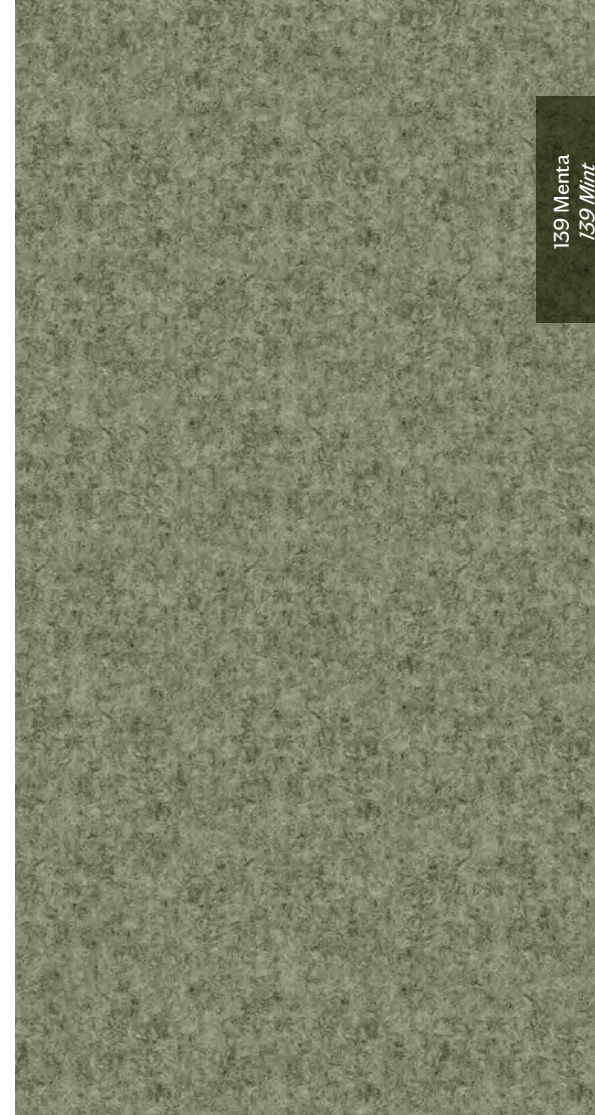


05 Grigio
05 Grey



06 Antracite
06 Anthracite

139 Menta
139 Mint



120 Grigio
120 Grey



125 Ciallo
125 Yellow



106 Rosso
106 Red



07 Marrone
07 Brown

FLUKSO REBEL ECONABUK



Composizione / Composition

68% PVC
30% Poliestere/Cotone
Polyester / Cotton PL/CO
2% Poliuretano / Polyurethan PU



Peso / Weight

720 gr/m²



Martindale

20.000
EN ISO 5470-2



Infiammabilità / Flammability

UNI 9175 classe IIM • EN 1021-1 • EN 1021-2 • BS 5852-1 cigarette test • BS 5852-1 match test • BS 5852 crib 5 • TB 117:2013



Sostenibilità / Sustainability

No ftalati / Phthalates free

LANEE



Composition

100% Pura Lana Vergine
Pure New Wool WV



Peso / Weight

410 gr/m²



Martindale

50.000
EN ISO 105-B02: 5
EN ISO 105-X12



Infiammabilità / Flammability

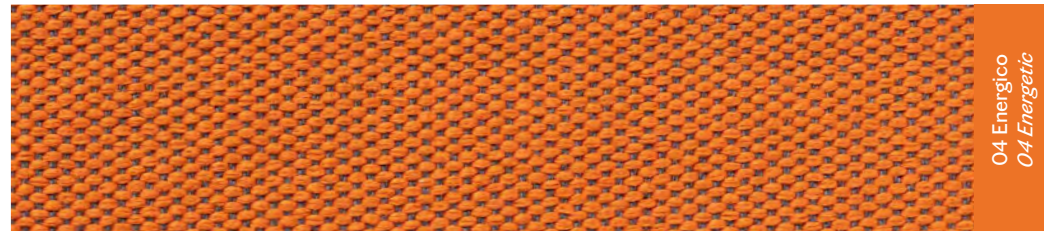
1 IM UNI 9175 • BS EN 1021-1:2006 • BS EN 1021-2:2006 • CAL TB 117:2013 • IMO - 2010 (FTP CODE)



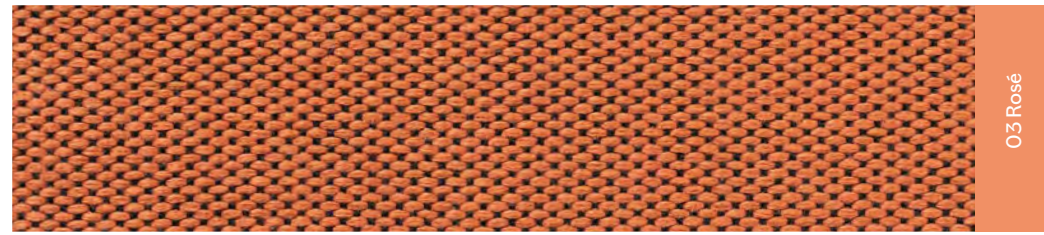
Sostenibilità / Sustainability

No ftalati / Phthalates free
No alogeni / Halogen free
OEKO-TEX

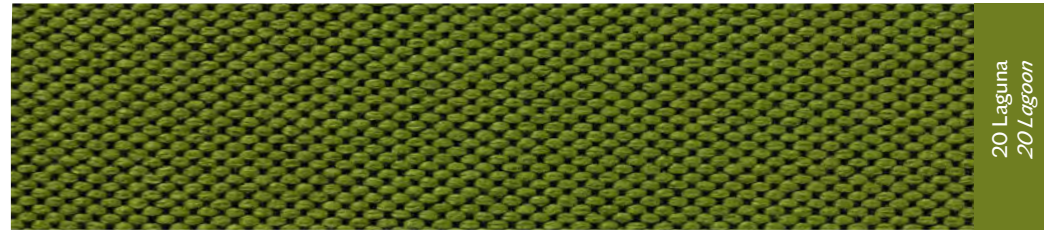
21 Ciallo Elettrico
21 Electric Yellow



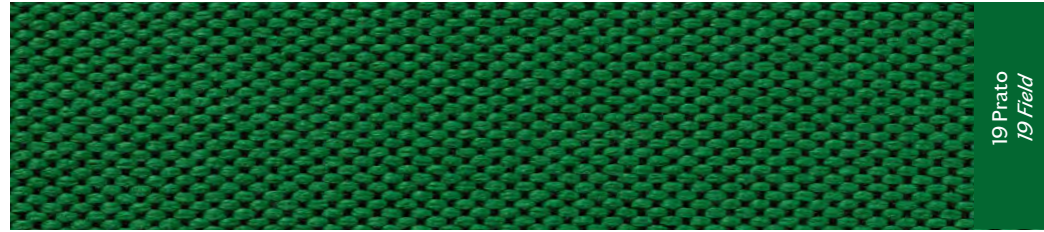
04 Energico
04 Energetic



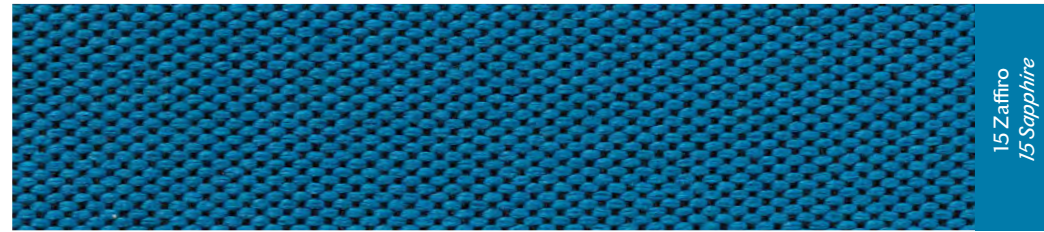
03 Rosé



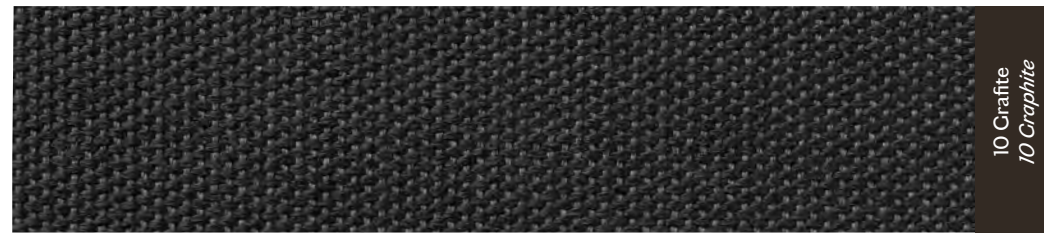
20 Laguna
20 Lagoon



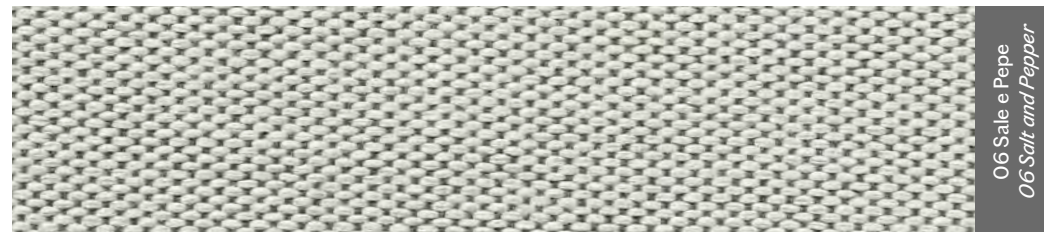
19 Prato
19 Field



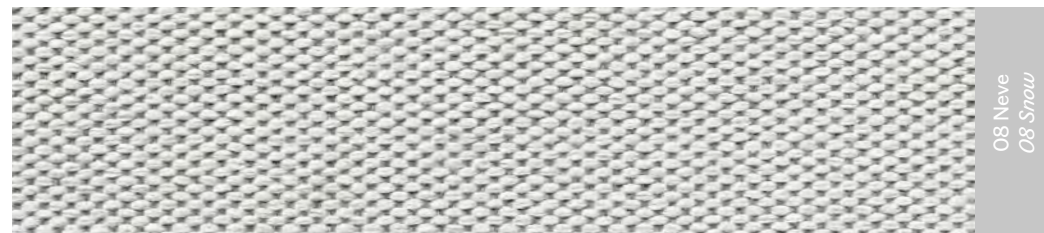
15 Zaffiro
15 Sapphire



10 Grafite
10 Graphite



06 Sale e Pepe
06 Salt and Pepper



08 Neve
08 Snow

VESCOM WILSON



Composizione / Composition
100% Poliestere Riciclato
/ Recycled Polyester PL



Peso / Weight
771 g/lin. m



Martindale
80.000
ISO 12947-2



Infiammabilità / Flammability
EN 1021/1-2 • BS 5852, crib 5 • NF D 60-013 (AM 18) • DIN 4102, B1 • UNI 9175, classe 1.IM • Cal TB 117 • NFPA 260, class 1 • IMO 2010 FTP part 8

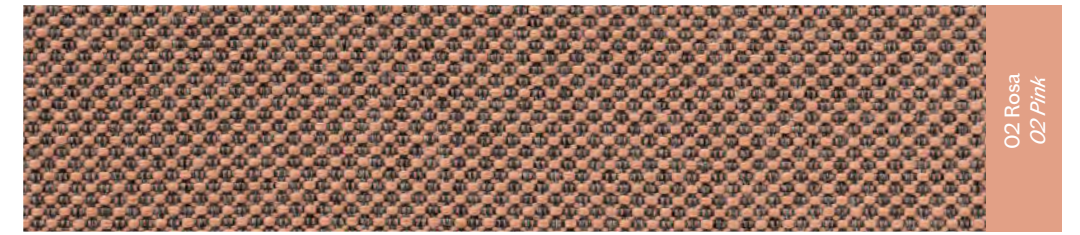


Sostenibilità / Sustainability
Tessuto derivato al 100% da plastica riciclata a mano morbida
Fabric made from 100% recycled plastic waste, soft touch structure
OEKO-TEX

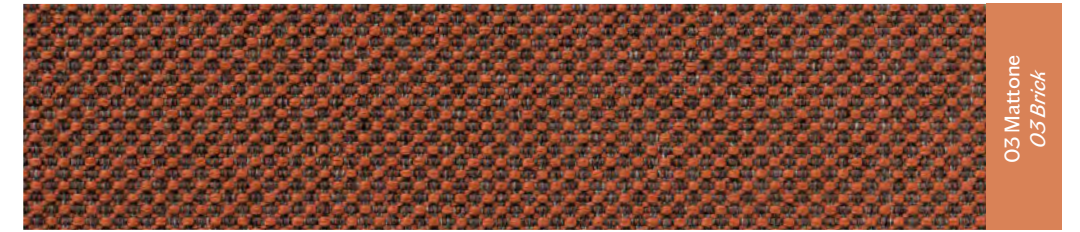
15 Latte e Menta
15 Milk and Mint



16 Ape
16 Bee



02 Rosa
02 Pink



03 Mattone
03 Brick



13 Petrolio
13 Petrol-Green



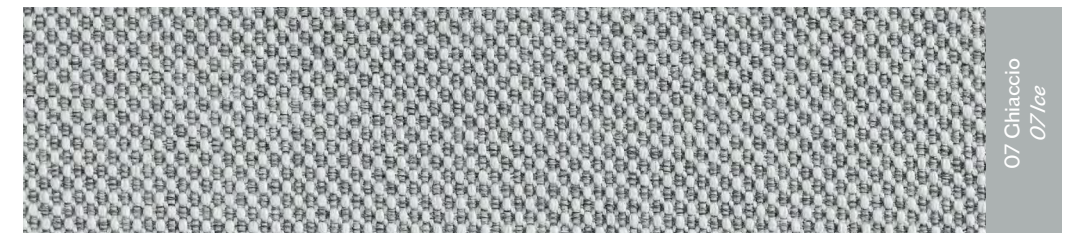
11 Notte
11 Night



09 Antracite
09 Anthracite



06 Sale e Pepe
06 Salt and Pepper



07 Chiaccio
07 Ice

VESCOM NORFOLK



Composizione / Composition
100% Poliestere Riciclato
/ Recycled Polyester PL



Peso / Weight
624 g/lin. m



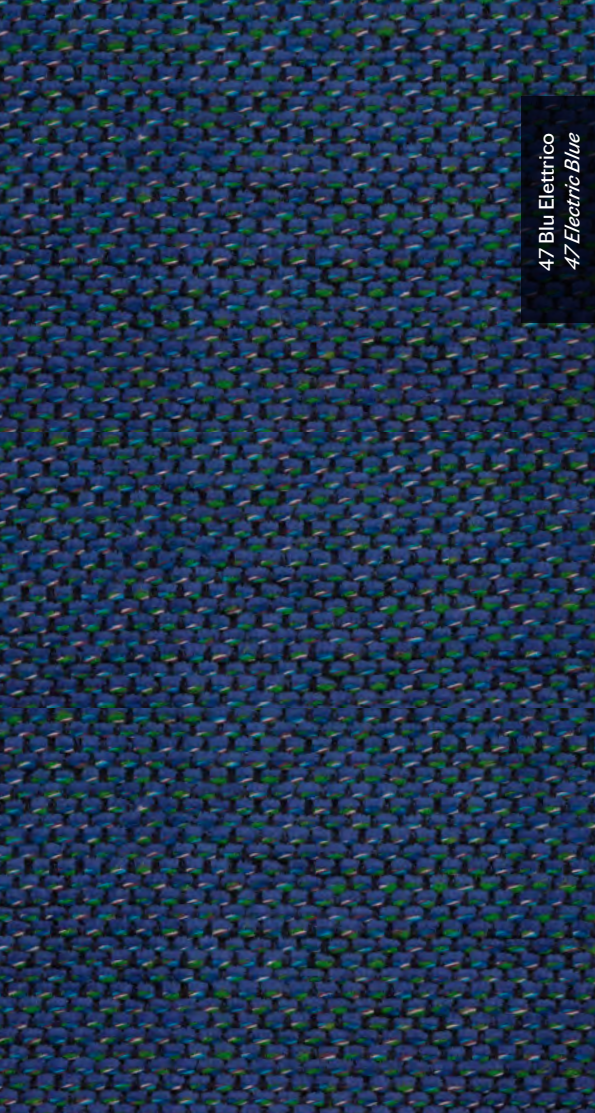
Martindale
70.000
ISO 12947-2



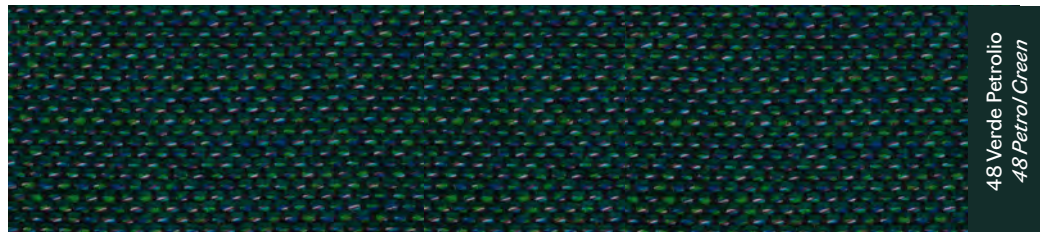
Infiammabilità / Flammability
EN 1021/1-2 • BS 5852, crib 5 • NF D 60-013 (AM 18) • DIN 4102, B1 • UNI 9175, classe 1.IM • Cal TB 117 • NFPA 260, class 1 • IMO 2010 FTP part 8



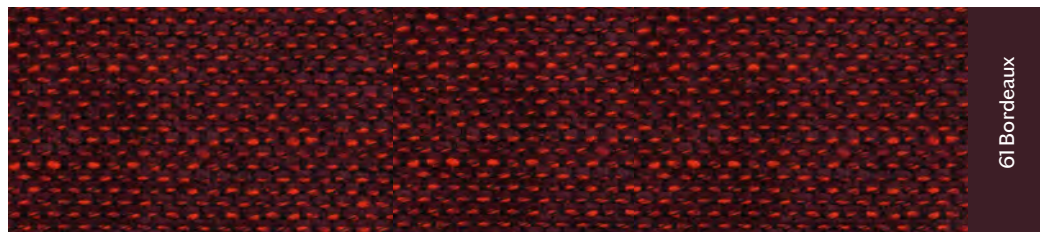
Sostenibilità / Sustainability
Tessuto derivato al 100% da plastica riciclata, con effetto 3D globale
Fabric made from 100% recycled plastic waste with all-over 3D effect
OEKO-TEX



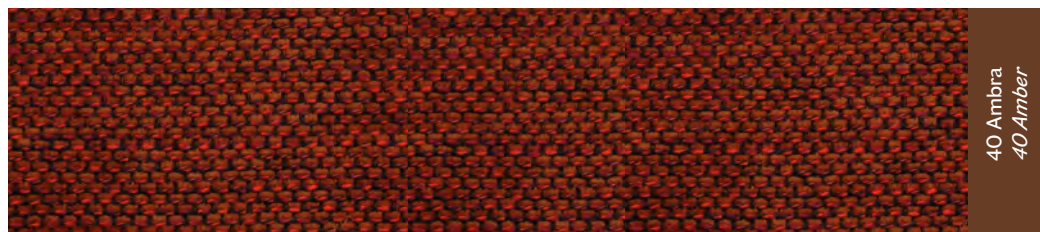
47 Blu Elettrico
47 Electric Blue



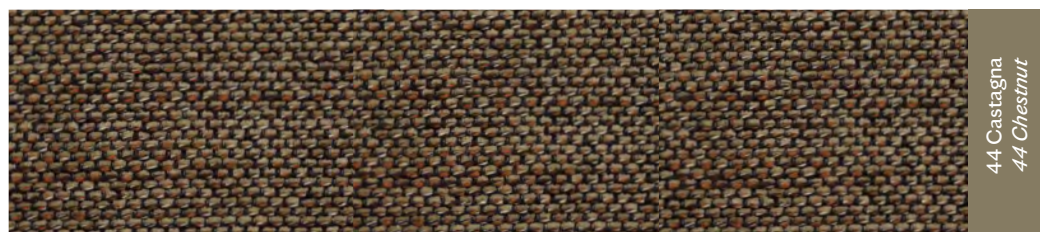
48 Verde Petrolio
48 Petrol Green



61 Bordeaux



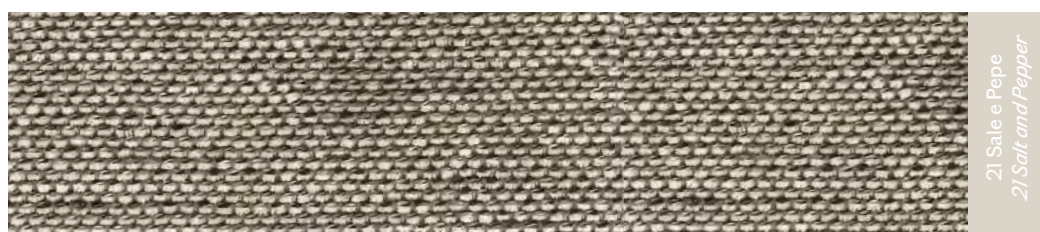
40 Ambra
40 Amber



44 Castagna
44 Chestnut



50 Tortora
50 Dove Grey



21 Sale e Pepe
21 Salt and Pepper

TORRILANA CUBBIO



Composizione / Composition

45% Cotone / Cotton CO
30% Poliestere / Polyester PL
15% Viscosa / Viscose VI
7% Lino / Linen LI



Peso / Weight

740 gr/ml



Martindale

52.000
EN ISO 12947-2 :2002



Infiammabilità / Flammability

BS 5852-1 (1979) CIGARETTE •
BS 5852:2006 CIGARETTE • BS
5852-1 (1979) MATCH interliner •
BS 5852:2006 MATCH • CAL TB
117:2013 • 1021-1:2014 CIGARETTE •
1021-1:2014 MATCH



821 Menta
821 Mint

KVADRAT RELATE



Composizione / Composition

100% Trevira CS



Peso / Weight

450 g/lin. m



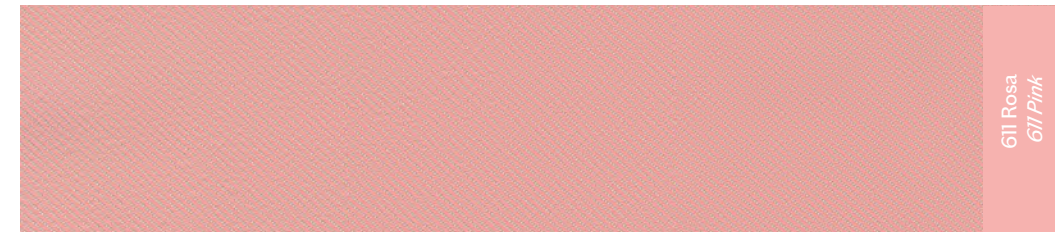
Martindale

80.000
EN ISO 12947

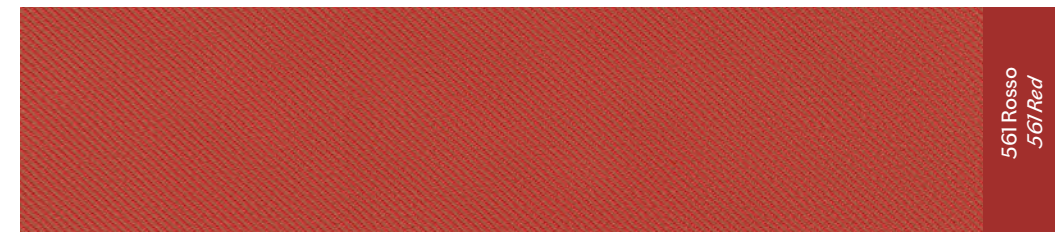


Infiammabilità / Flammability

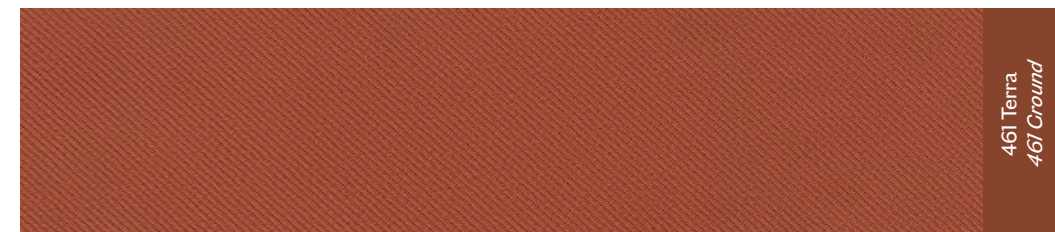
BS 5852 Crib 5 • IMO FTP Code
2010 Part 8 • NF D 60 013 • NFPA 701
• SN 198 898 5.2 • UNI 9177 Classe 1 •
US Cal. Bull. 117-2013 • NF P 92 507 MI
• DIN 4102 B1 • EN 1021-1/2 • ÖNORM
B1/Q1 • ASTM E84 Class A Unadhered
• ASTM E84 Class B Adhered • UNI
9175 IIM • AS/NZS 3837 class 2 • EN
13501-1, B-s1, d0 • BS 5867 part 2 type
B • BS 5852 part 1 with treatment



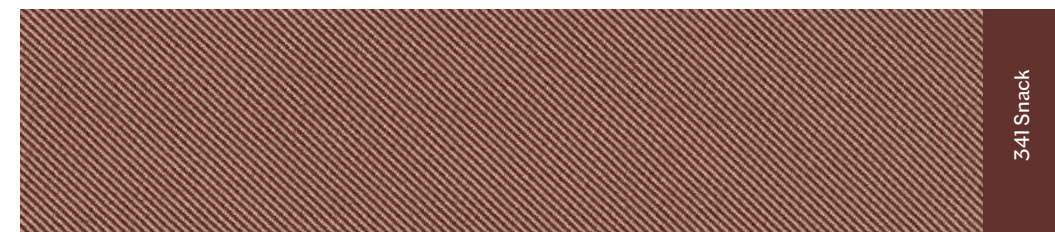
611 Rosa
611 Pink



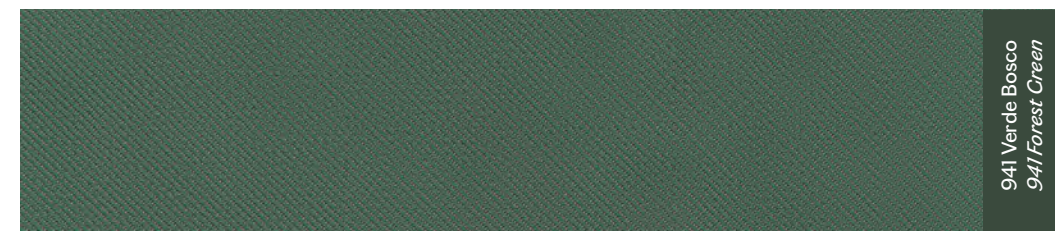
561 Rosso
561 Red



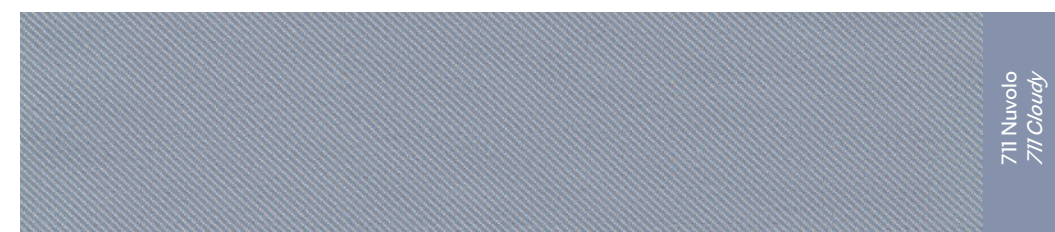
461 Terra
461 Ground



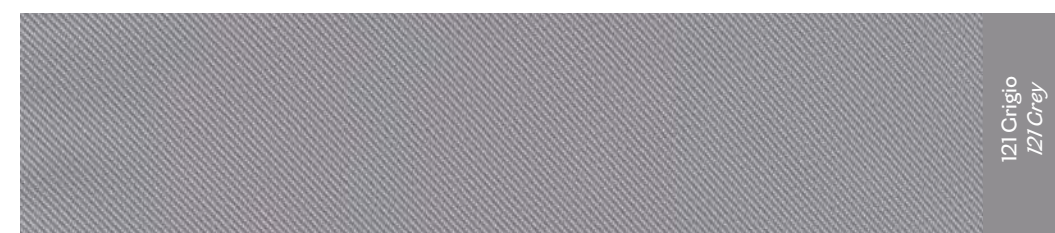
341 Snack



941 Verde Bosco
941 Forest Green



711 Nuvolo
711 Cloudy

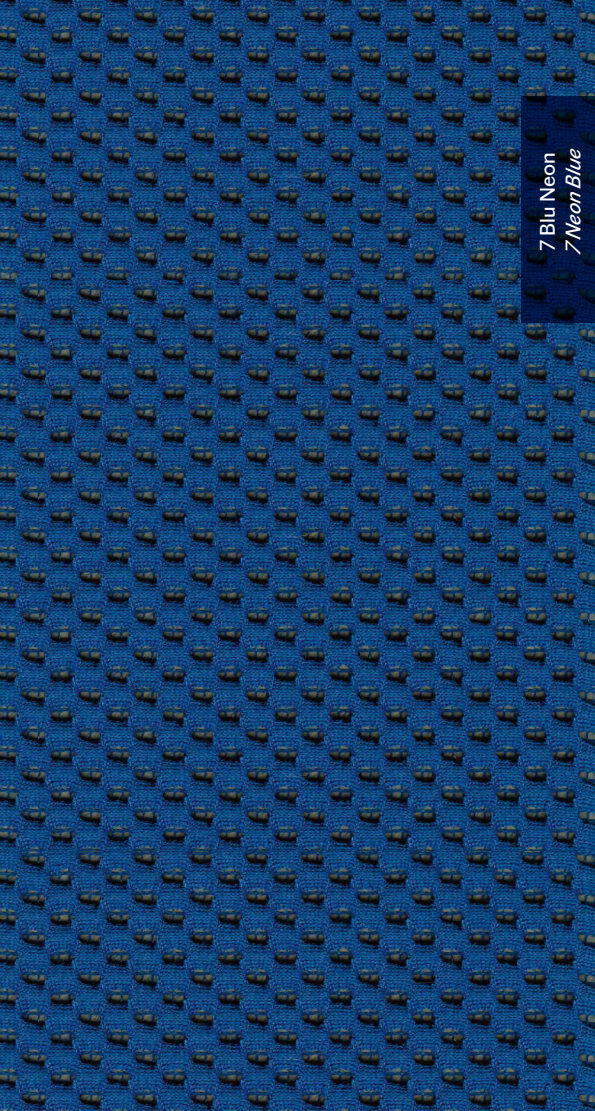


121 Grigio
121 Grey

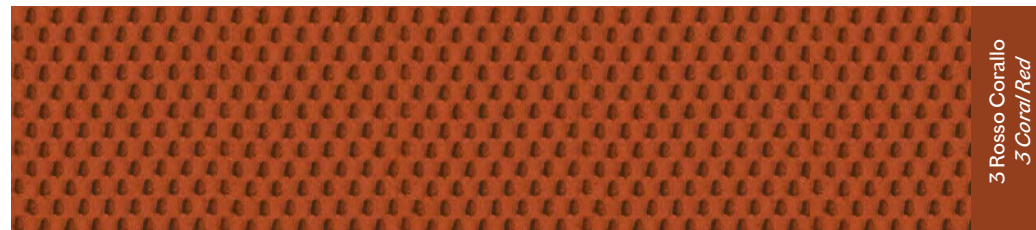


Sostenibilità / Sustainability

EU Ecolabel



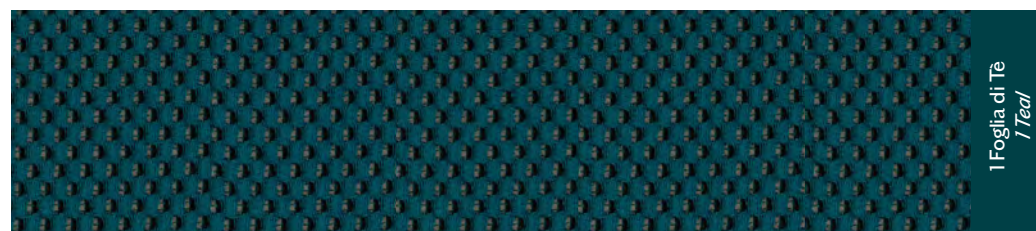
7 Blu Neon
7 Neon Blue



3 Rosso Corallo
3 Coral Red



5 Verde Salvia
5 Sage Green



1 Foglia di Tè
1 Teal

MESH



Composizione / Composition
100% Poliestere / Polyester PL
con trattamento ritardante di fiamma
with flame retardant treatment



Peso / Weight
550 gr/m²



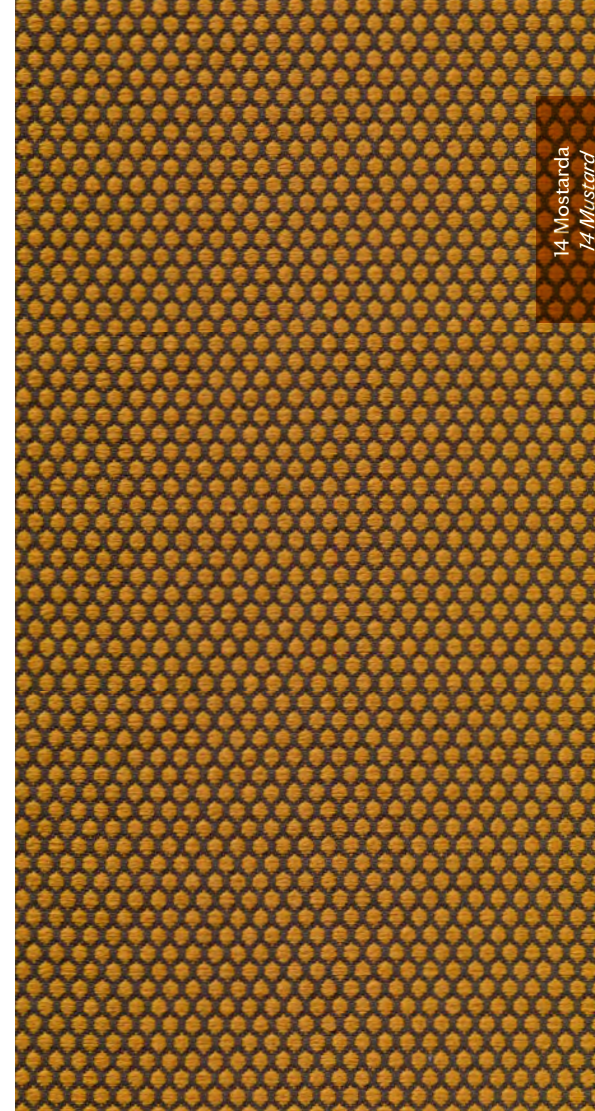
Martindale
30.000



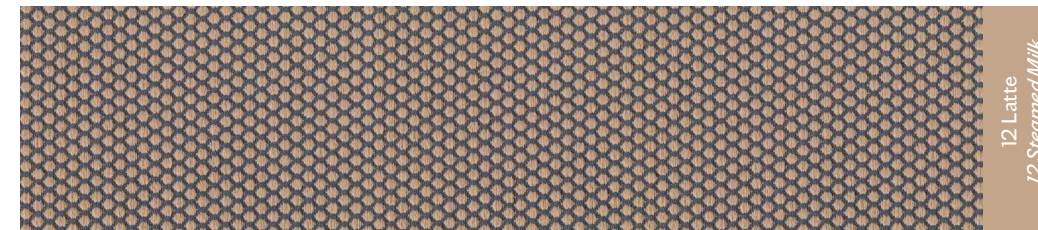
Infiammabilità / Flammability
1 IM • BS 5852 source 0 • BS 5852-1 • BS 5852
CRIB5 • EN 1021-1/2 • CAL TB 117:2013



Facile da pulire / Easy-to-clean



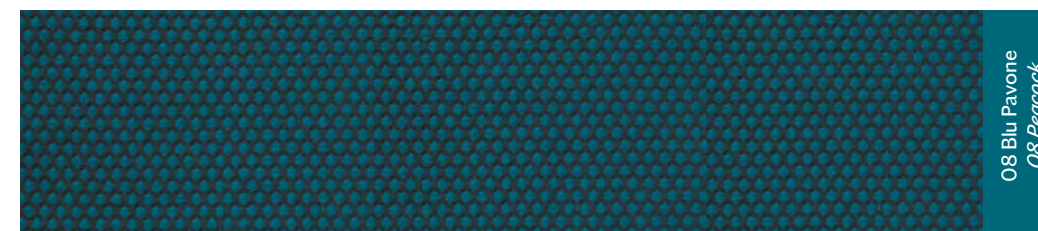
14 Mostarda
14 Mustard



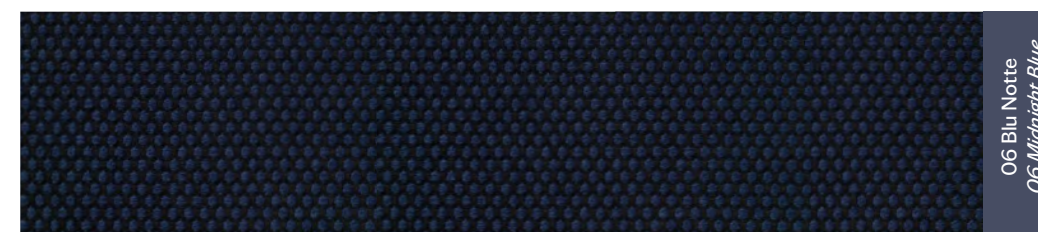
12 Latte
12 Steamed Milk



03 Ciliegia
03 Cherry



08 Blu Pavone
08 Peacock



06 Blu Notte
06 Midnight Blue



18 Grafite
18 Graphite

VESCOM ROLLA



Composizione / Composition
100% Poliestere / Polyester PL
con trattamento ritardante di fiamma
with flame retardant treatment



Peso / Weight
775 gr/m²



Martindale
50.000
ISO 12947-2

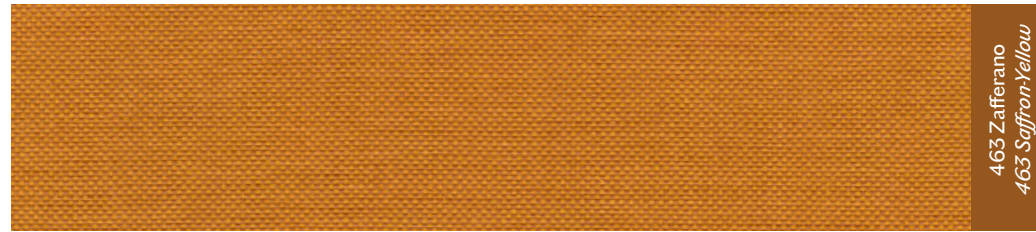


Infiammabilità / Flammability
EN 1021/ 1-2 • BS 5852, crib 5 • NF P
92 / 503 - 507, MI • DIN 4102, B1 • UNI
9175, classe 1.IM • Cal TB 117 • NFPA
260, class 1 • IMO 2010 FTP part 8

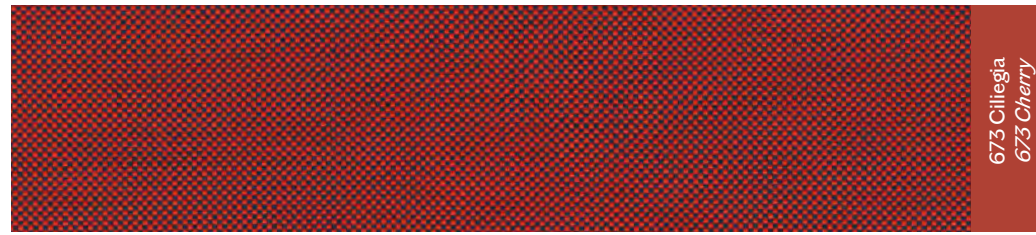


Sostenibilità / Sustainability
OEKO-TEX

843 Zucchero
843 Sugar



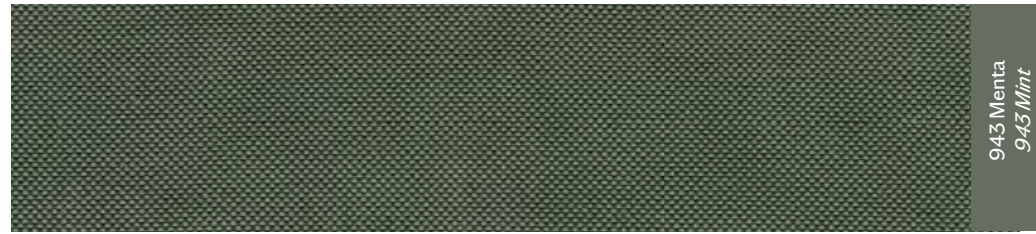
463 Zafferano
463 Saffron-Yellow



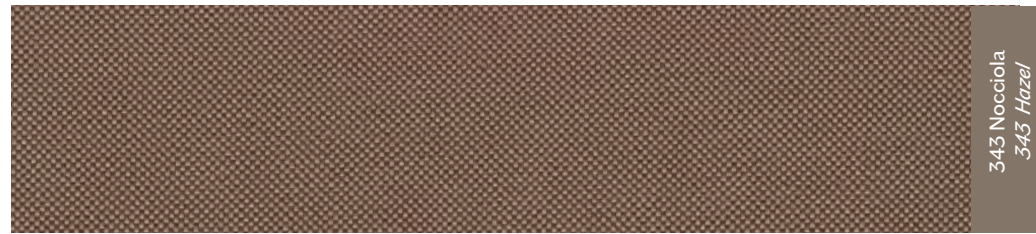
673 Ciliegia
673 Cherry



763 Blu
763 Blue



943 Menta
943 Mint



343 Nocciola
343 Hazel



142 Sale e Pepe
142 Salt and Pepper

KVADRAT FIELD 2



Composizione / Composition
100% Trevira CS



Peso / Weight
450 g/lin. m



Martindale
80.000
EN ISO 12947

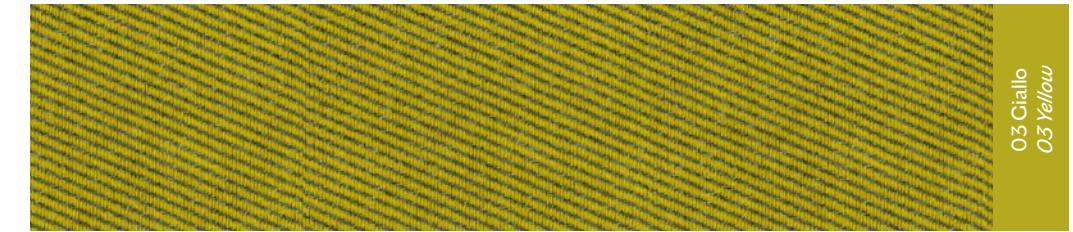
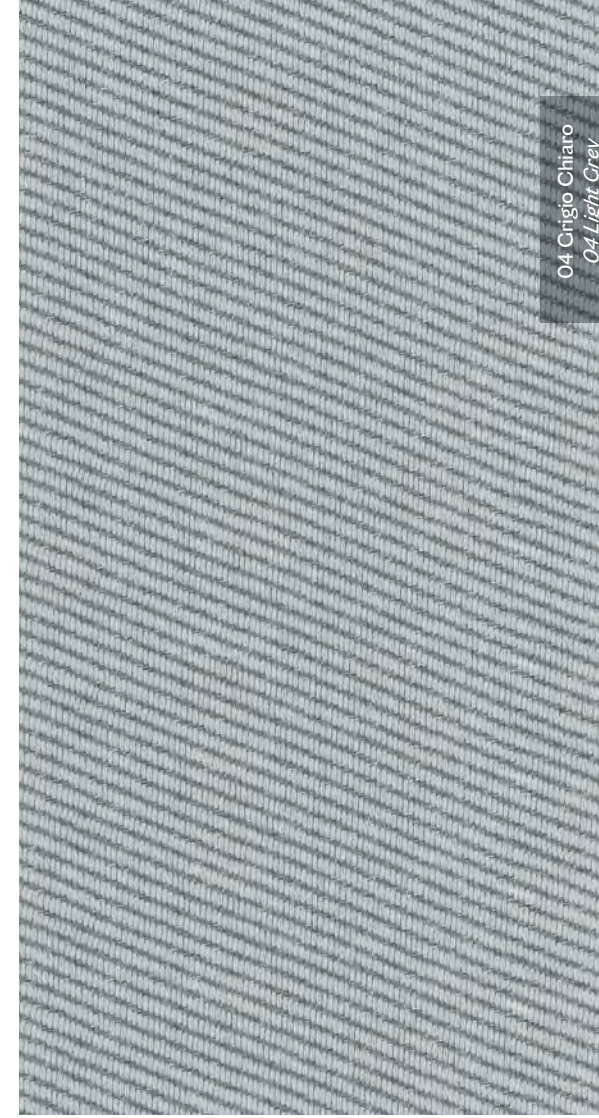


Infiammabilità / Flammability
BS 5852 Crib 5 • FAR 25.853 • IMO FTP Code 2010 Part 8 • NF D 60 013 • NF P 92 507 M1 • SN 198 898 5.2 • UNI 9175 IIM • UNI 9177 Classe I • US Cal. Bull. 117-2013 • DIN 4102 B1 • EN 1021-1/2 • NFPA 701 • ASTM E84 Class A Unadhered • AS/NZS 3837 class 1 • ÖNORM B1/Q1 • EN 13501-1, B-s1, d0

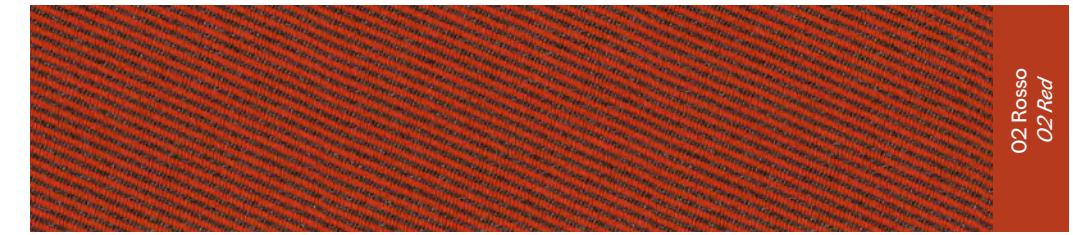


Sostenibilità / Sustainability
EU Ecolabel
Creenguard Cold
HPD
EPD

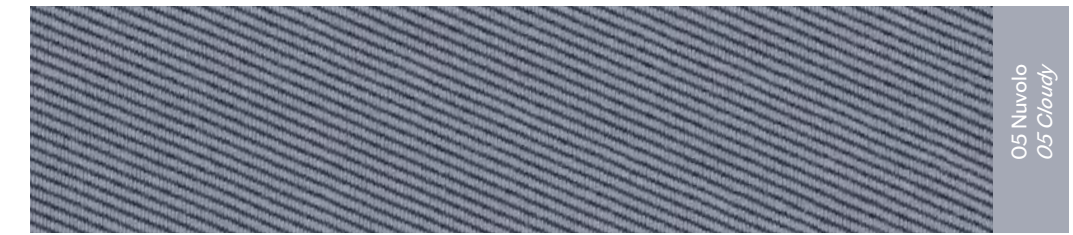
04 Grigio Chiaro
04 Light Grey



03 Ciallo
03 Yellow



02 Rosso
02 Red



05 Nuvolo
05 Cloudy



08 Petrolino
08 Blue-Green

VESCOM HARDING



Composizione / Composition
100% Poliestere riciclato
/ Recycled Polyester PL



Peso / Weight
660 gr/m¹



Martindale
130.000
ASTM D4157



Infiammabilità / Flammability
EN 1021/1-2 • BS 5852, crib 5 • NF D 60-013 (AM 18) • DIN 4102, B1 • UNI 9175, classe I,IM • Cal TB 117 • NFPA 260, class 1 • IMO 2010 FTP part 8



Sostenibilità / Sustainability
Tessuto derivato al 100% da bottiglie di plastica riciclata
Fabric made from 100% recycled plastic waste
OEKO-TEX



040 Black and White

TORRILANA BRIONNE



Composizione / Composition

18% Cotone / Cotton CO
31% Poliestere / Polyester PL
26% Lana rigenerata
/Regenerated Wool WO
22% Acrilico / Acrylic PC
3% Poliammide / Polyamide PA



Peso / Weight

529 gr/m²



Martindale

40.000
UNI EN ISO 12947-2 :2002



Infiammabilità / Flammability

BS 5852 -1 (1979) CIGARETTE
BS 5852 : 2006 CIGARETTE
CAL TB 117:2013



005 Bacca
005 Berry

TORRILANA RAKAM



Composizione / Composition

72% Cotone / Cotton CO
8% Lino / Linen LI
15% Viscosa / Viscose VI
5% Poliammide / Polyamide PA



Peso / Weight

630 gr/m²



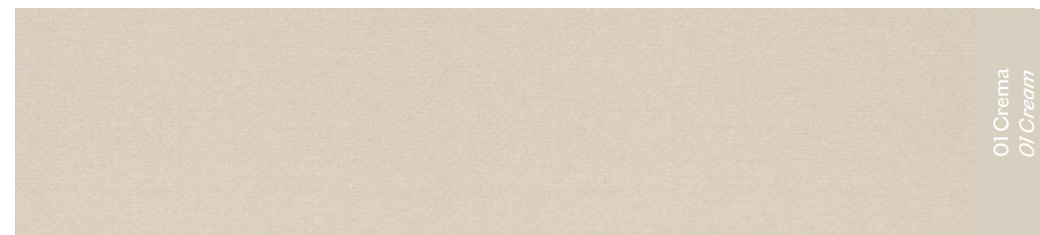
Martindale

30.000
UNI EN ISO 12947-2 :2000



Infiammabilità / Flammability

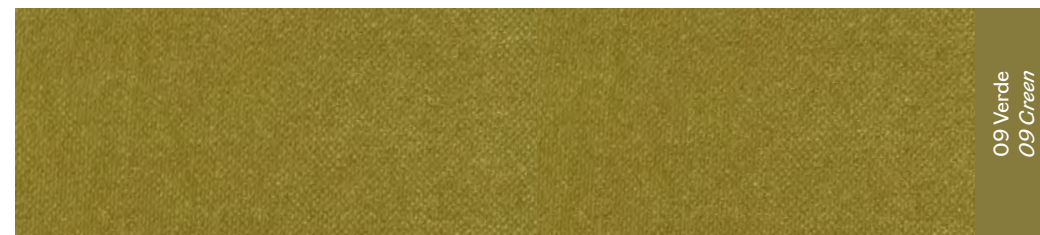
BS 5852 -1 (1979) CIGARETTE
BS 5852 : 2006 CIGARETTE
BS 5852 -1 (1979) MATCH
BS 5852 : 2006 MATCH



01 Crema
01 Cream



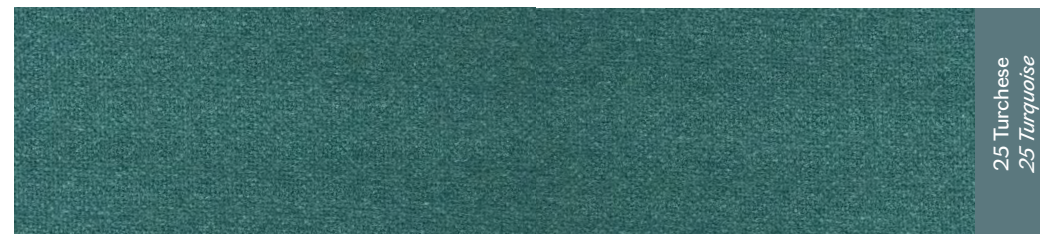
36 Rosa intenso
36 Intense Rose



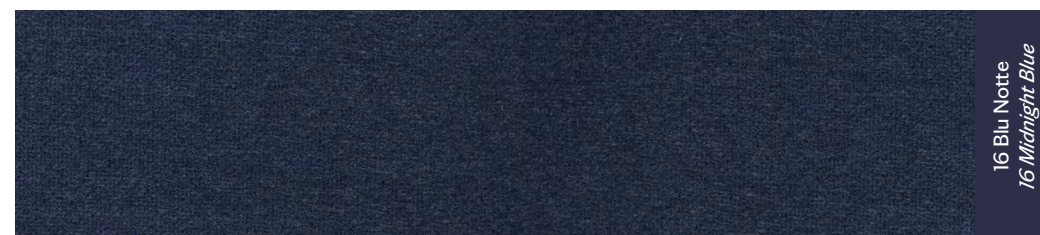
09 Verde
09 Green



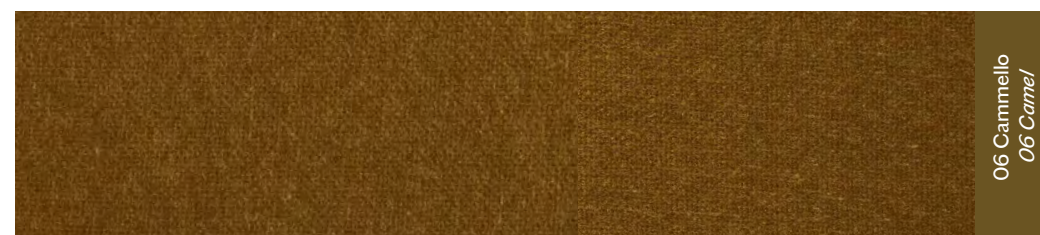
24 Foglia di Tè
24 Teal



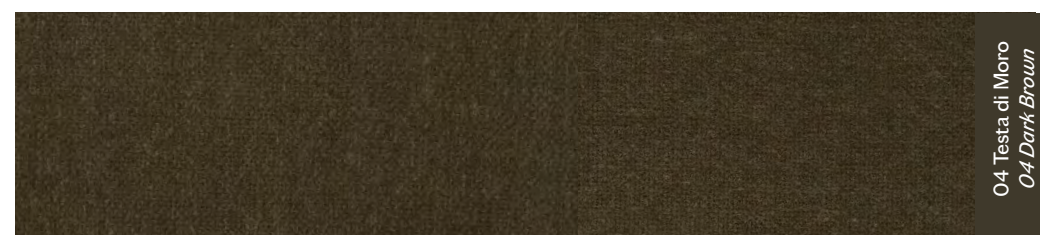
25 Turchese
25 Turquoise



16 Blu Notte
16 Midnight Blue



06 Cammello
06 Camel



04 Testa di Moro
04 Dark Brown

SHELTER VELVET



Composizione / Composition
100% Poliestere / Polyester PL
con trattamento ritardante di fiamma
with flame retardant treatment



Peso / Weight
756 gr/mtl²



Martindale
100.000



Infiammabilità / Flammability
EN1021/1 (cigarette) - 2 (match) •
BS5852,1/2 • UNI 9175, classe 1 IM •
CAL TB 117 • NFPA 260 • IMO 2010
FTP part 8



35 Salmone
35 Salmon

MAHARAM MERIT



Composizione / Composition
76% Poliestere Riciclato
/ Recycled Polyester PL
24% Poliestere / Polyester PL



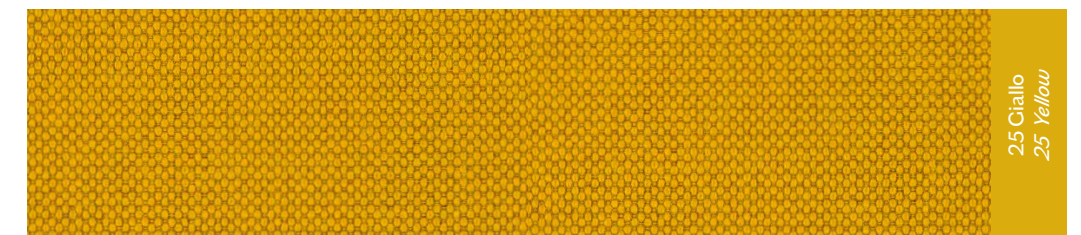
Peso / Weight
550 g/m²



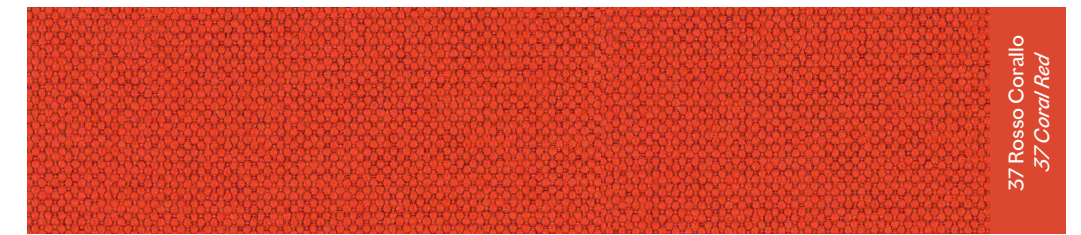
Martindale
85.000
ASTM D4157



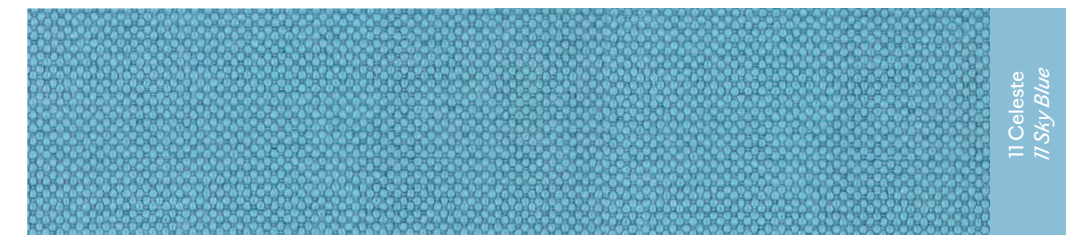
Infiammabilità / Flammability
60.000
AS/NZS 1530.3 • AS/NZS 3837
Unadhered • ASTM E 84 Unadhered
• BS 476 Unadhered* • BS 5852 Crib
5* • CAL 117-2013 • CAN ULC S102
Unadhered • EN 1021-1* • EN 1021-2* •
EN 13501 Unadhered* • GB/T 17591* •
ISO 5660 Unadhered • NFPA 260 •
SN 198 898*
*passes with additional treatment



25 Giallo
25 Yellow



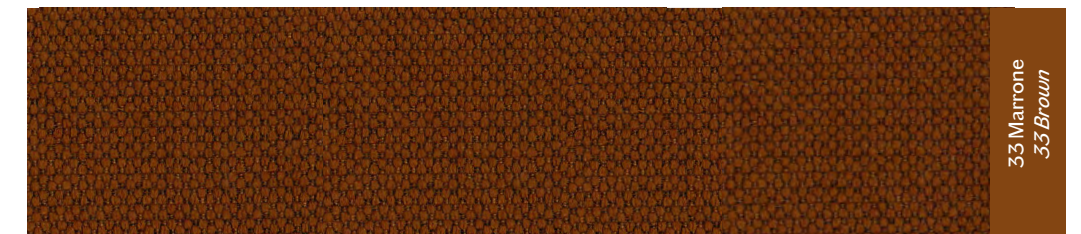
37 Rosso Corallo
37 Coral Red



11 Celeste
11 Sky Blue



08 Blu Cobalto
08 Cobalt Blue



33 Marrone
33 Brown



03 Grigio
03 Grey



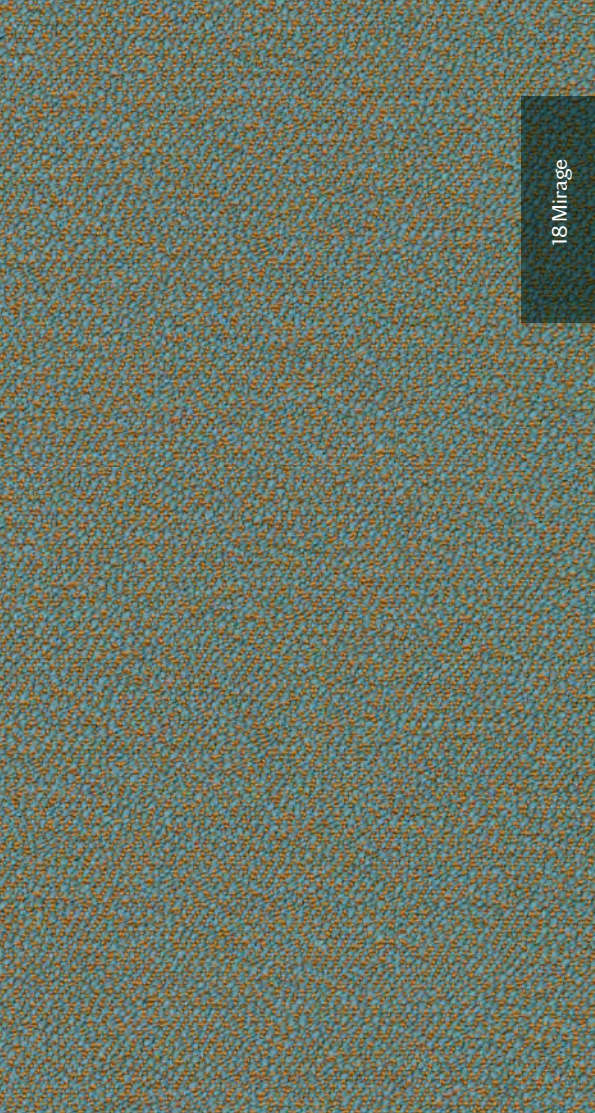
23 Sale e Pepe
23 Salt and Pepper



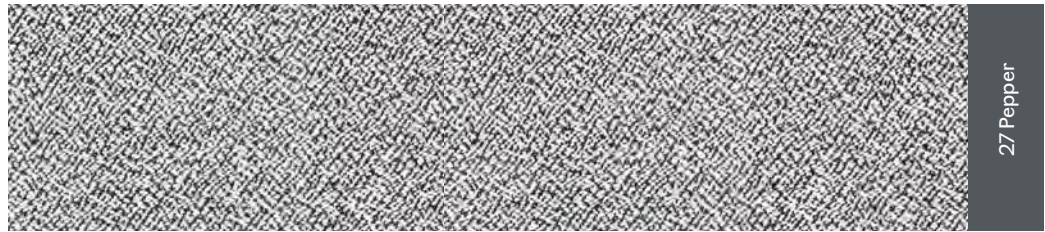
Idrorepellente / Water repellent



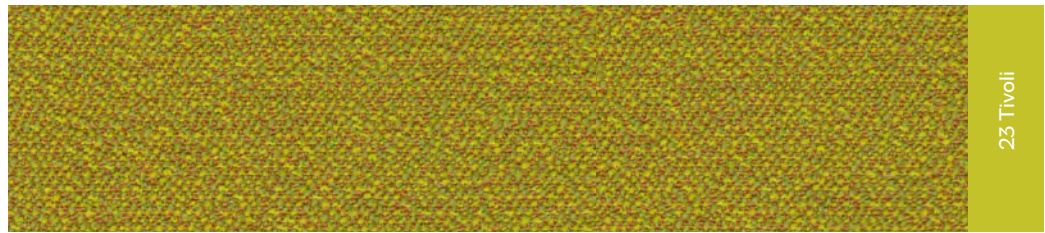
Sostenibilità / Sustainability
Creenguard and Creenguard Gold
Certified
GRS Certified
REACH Compliant
Contains Recycled Content
FR Free



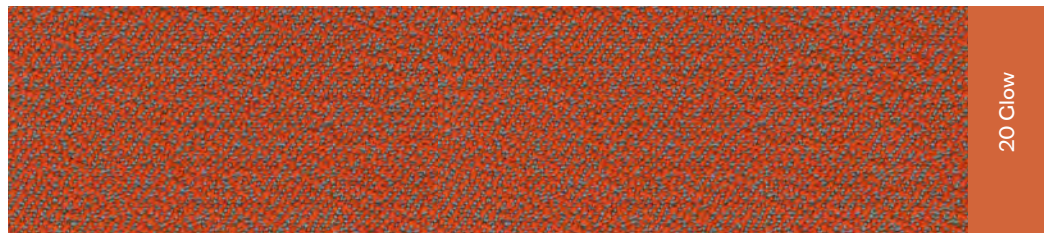
18 Mirage



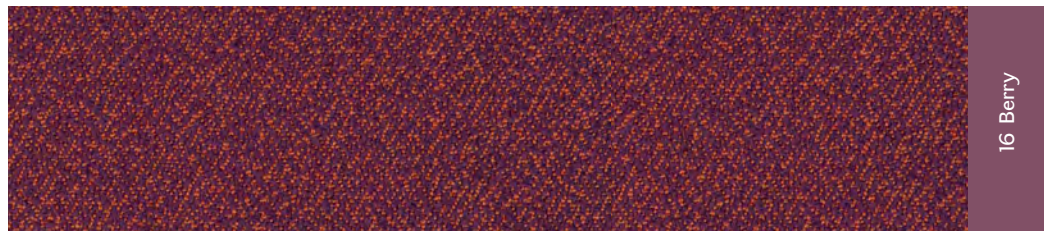
27 Pepper



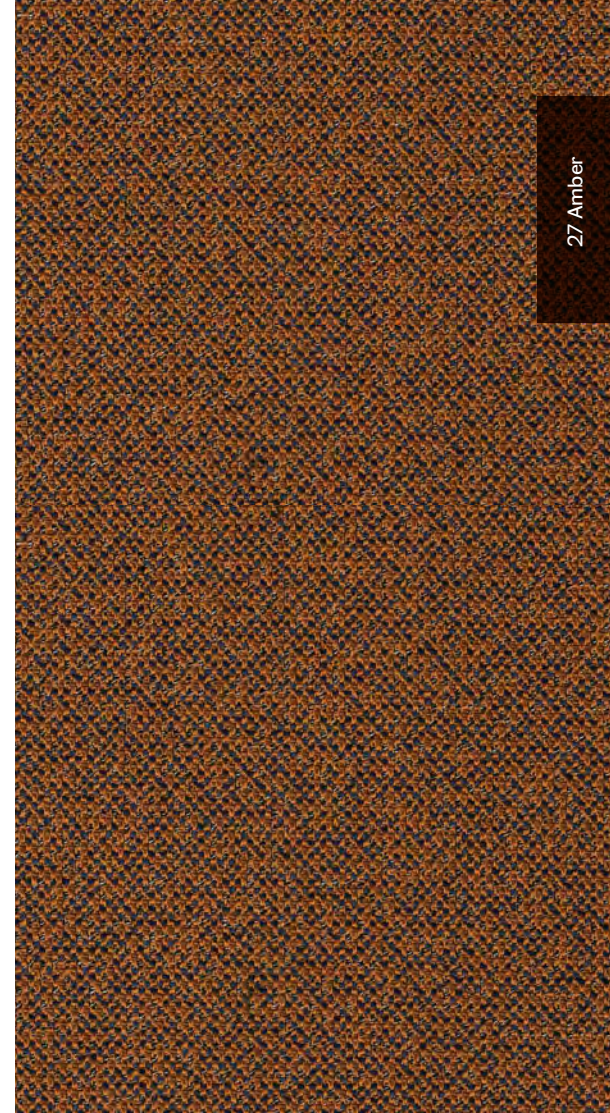
23 Tivoli



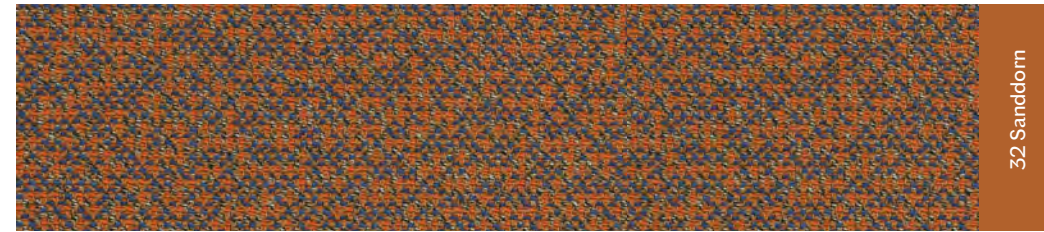
20 Clow



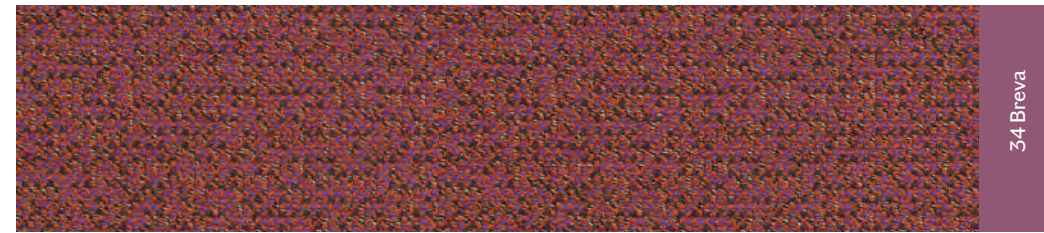
16 Berry



27 Amber



32 Sanddorn



34 Breva



33 Indio



26 Jungle

ROHI SERA



Composizione / Composition

94% Pura Lana Vergine / Pure Wool/WV
6% Poliammide / Polyamide PA



Peso / Weight

650 g/m²



Martindale

122.000
ISO 12947-2



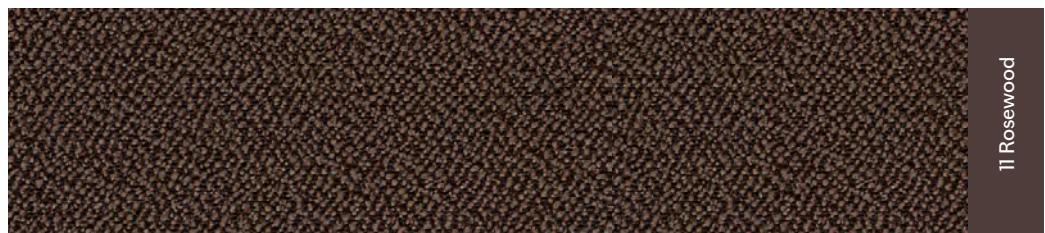
Infiammabilità / Flammability

CAL TB 117 - 2013 • DIN EN 1021-1/-2
• BS 5852 part 1: 1979 • UNI 9175 1 IM
• IMO 2014/90/EU Marine Equipment Directive (MED)

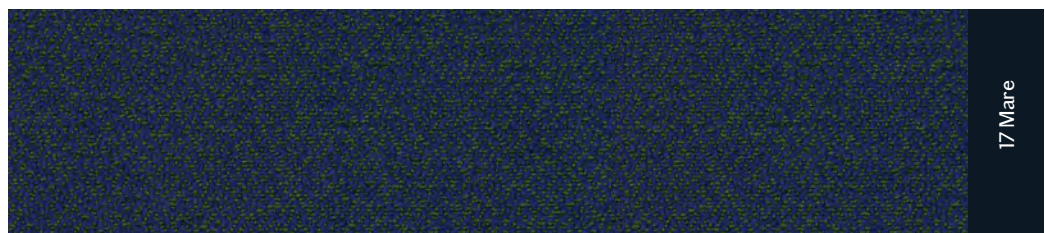
with additional flame retardant finish:
BS 5852: 2006 Crib5 • DIN 4102-1 B2
• DIN EN 13501-1 E • FAR 25.853 12 sec. vertical



09 Wanlut



11 Rosewood



17 Mare



Sostenibilità / Sustainability

Materiale completamente naturale e rinnovabile
Natural, renewable material
RAL-UZ 117 Attachment 2+3
IWTO Guidelines for Wool Sheep Welfare
FR-free
AB 2998 (US export standard)
REACH (EU export standard)

ROHI MICA



Composizione / Composition

95% Pura Lana Vergine / Pure Wool/WV
5% Poliammide / Polyamide PA



Peso / Weight

600 gr/m²



Martindale

70.000
ISO 12947-2



Infiammabilità / Flammability

CAL TB 117 - 2013 • DIN EN 1021-1/-2
• BS 5852 part 1: 1979 • UNI 9175 1 IM
• ÖNORM B1/Q1 • IMO 2014/90/EU Marine Equipment Directive wWMed)

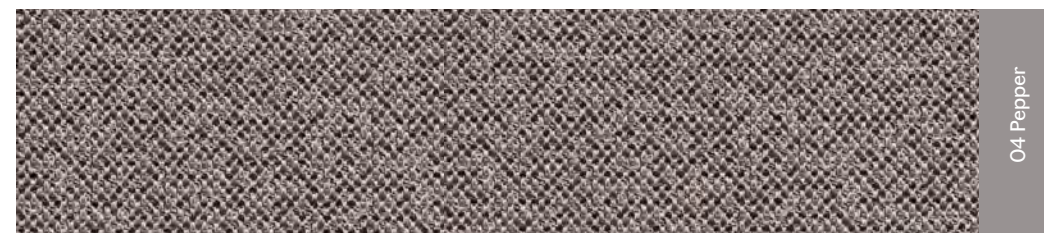
with additional flame retardant finish:
BS 5852: 2006 Crib5 • DIN 4102-1 B2
• DIN EN 13501-1 E • FAR 25.853 12 sec. vertical



09 Secret



19 Mud



04 Pepper



Sostenibilità / Sustainability

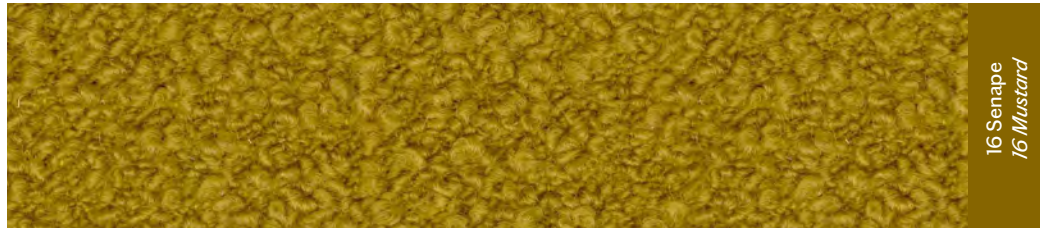
Materiale completamente naturale e rinnovabile
Natural, renewable material
RAL-UZ 117 Attachment 2+3
IWTO Guidelines for Wool Sheep Welfare
FR-free
AB 2998 (US export standard)
REACH (EU export standard)



05 Noce
05 Walnut



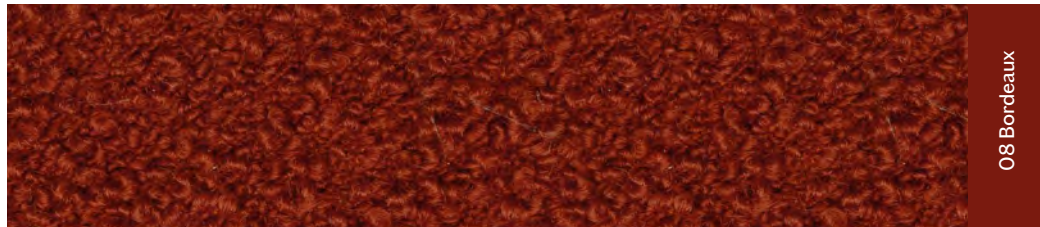
01 Panna
01 Cream



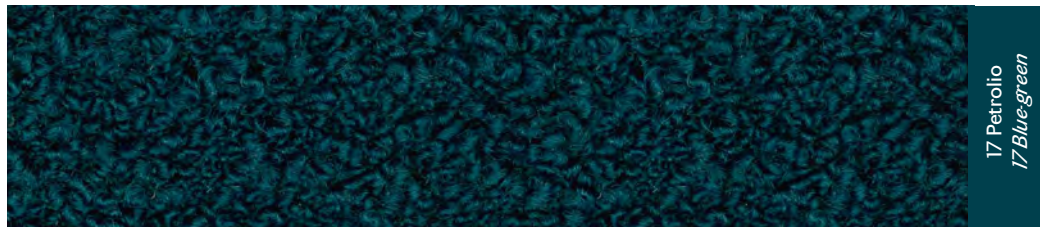
16 Senape
16 Mustard



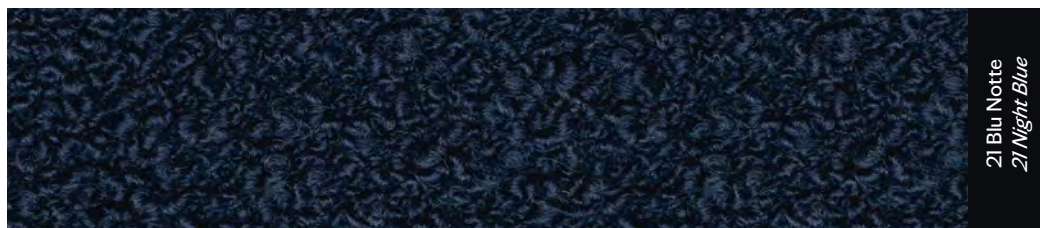
06 Nocciola
06 Hazelnut



08 Bordeaux



17 Petrolio
17 Blue-green



21 Blu Notte
21 Night Blue

CLOUD



Composizione / Composition
61% Purla Lana Vergine / Pure Wool WV
32% Cotone / Cotton CO
7% Poliammide / Polyamide PA



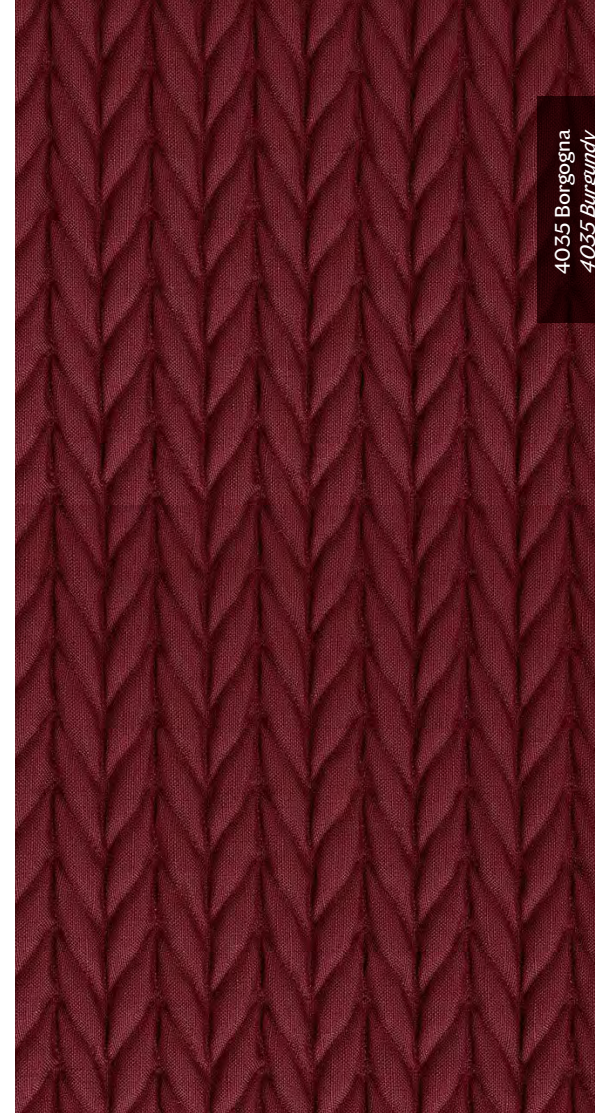
Peso / Weight
1200 gr/m



Martindale
25.000
DIN EN ISO 12947-2



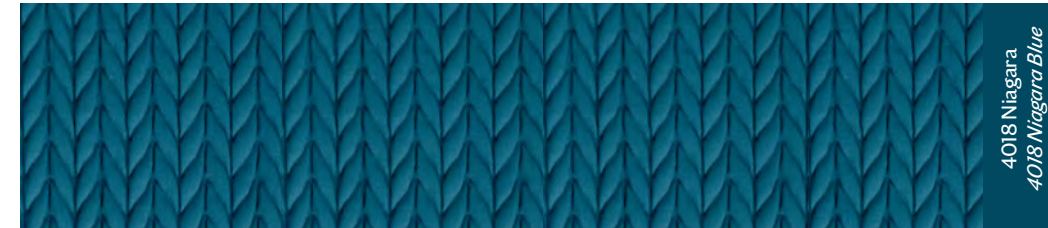
Infiammabilità / Flammability
Cal TB 117
BS5852 source 0/EN1021-1:2006
BS5852 source 1/EN1021-2:2006



4035 Borgogna
4035 Burgundy



405 Sabbia
405 Sand



4018 Niagara
4018 Niagara Blue

FLUKSO ESEDRA TRICOT



Composizione / Composition
80% Poliestere / Polyester PL
20% Poliammide / Polyamide PA
con trattamento ritardante di fiamma
with flame retardant treatment



Peso / Weight
870 g/m²



Martindale
80.000
UNI EN ISO 12947-2

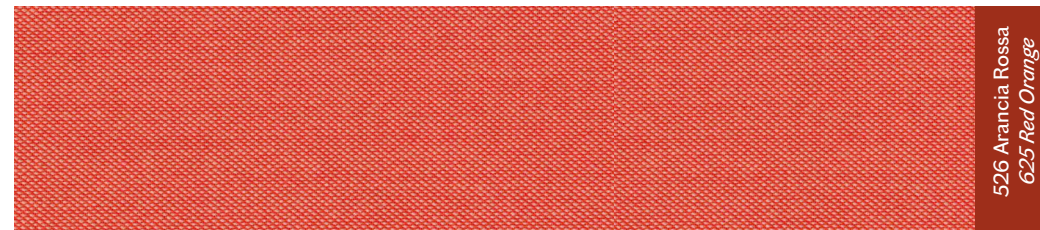


Infiammabilità / Flammability
UNI 8456 - 9174 classe I • UNI 9175
classe IIM • EN 1021-1 • EN 1021-2 • BS
5852 crib 5 • DIN 4102 B1 • NF P 92
503-507 MI • TB 117 sez. E p.te I

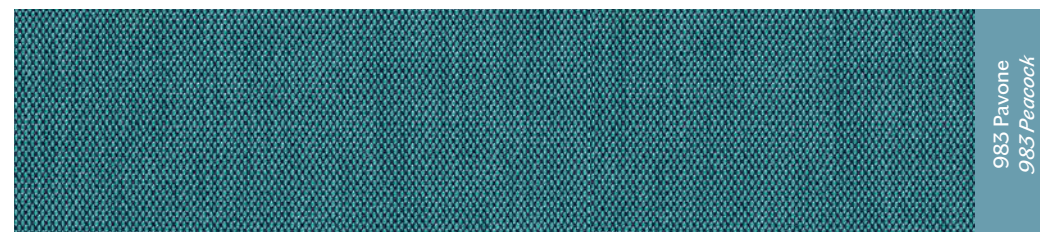


**Trattamento idrorepellente e anti-
batterico (su richiesta)**
Water repellent and antibacterial
treatment (on request)

515 Pesca
515 Peach



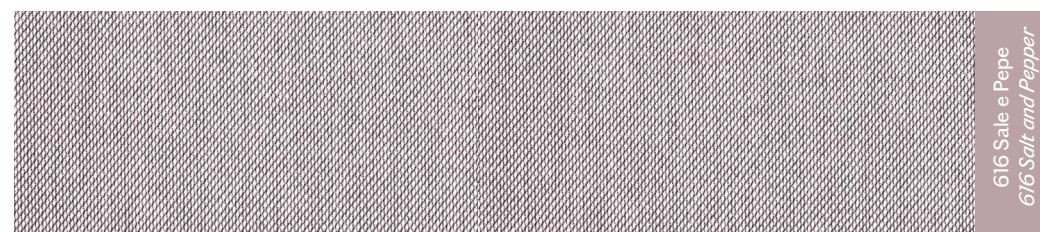
526 Arancia Rossa
625 Red Orange



983 Pavone
983 Peacock



806 Elettricità
806 Electricity



616 Sale e Pepe
616 Salt and Pepper

KVADRAT STEELCUT TRIO 3



Composizione / Composition

90% Lana Vergine Pettinata
/New Wool Worsted NW
10% Nylon NY



Peso / Weight

770 g/lin.m



Martindale

100.000
DIN EN ISO 12947



Infiammabilità / Flammability

AS/NZS 1530.3 • AS/NZS 3837 class 2 • ASTM E84 Class B Unadhered • ASTM E84 Class B Adhered • BS 5852 crib 5 with treatment* • BS 5852 ignition source 3 • BS 5852 part 1 • EN 1021-1/2 • GB 50222 B1 with treatment (Chinese)* • IMO FTP Code 2010 Part 8 • NF D 60 013 • NFPA 260 • ÖNORM B1/Q1 • SN 198 898 5.3 with treatment* • UNI 9175 IIM • US Cal. Bull. 117-2013

*necessary flame retardant treatment



Sostenibilità / Sustainability

EU Ecolabel
Creenguard Gold
HPD
EPD

MANTENIMENTO E PULIZIA / CLEANING AND MAINTENANCE



Legno / Wood

Per la pulizia quotidiana utilizza un panno morbido inumidito con un detergente liquido neutro. Le macchie più ostinate possono essere eliminate impiegando, con cautela, ammoniac diluita con molta acqua. Evita l'uso di detergenti aggressivi.

For everyday cleaning, use a soft cloth, slightly moistened with a neutral liquid detergent. Stubborn stains can be removed by careful use of ammonia diluted with plenty of water. Do not use aggressive detergents.



Ceramica e Marmo / Ceramic and Marble

Per la regolare pulizia della superficie è sufficiente utilizzare un panno in microfibra umido. Puoi anche aiutarti con un detergente liquido neutro, da utilizzare con spugna morbida o panno in microfibra. Per macchie persistenti, strofina una spugna poco abrasiva sui residui. Se liquidi macchianti e sostanze acide vengono rovesciate sul piano, rimuovi e risciacqua immediatamente la superficie.

For normal surface cleaning, just use a damp microfibre cloth. You can also use a neutral liquid detergent on a soft sponge or a microfibre cloth. For stubborn stains, gently rub with a slightly abrasive sponge. If staining liquids or acidic substances are spilled on the surface, remove them immediately and rinse the surface with water.



Fenix

Per le macchie comuni è sufficiente pulire la superficie con acqua calda, utilizzando un panno non abrasivo. Le macchie ostinate possono essere rimosse con detergenti domestici o solventi, sciacquando poi con acqua calda. Per graffi strofina una spugna di melamina, leggermente inumidita, sull'area rovinata. Non trattare mai la superficie con prodotti abrasivi, sbiancanti e utensili metallici per rimuovere le macchie. Evita gli acidi.

For everyday stains, clean the surface with hot water and a non-abrasive cloth. Stubborn stains can be removed with domestic detergents or solvents and then rinsed with hot water. For scratches, rub with a slightly damp melamine sponge. Never use abrasive products, bleaching agents or metal tools on the surface. Avoid acids.



Cotone / Cotton

Estremamente versatile, il cotone può essere lavato ad alte temperature senza danneggiarne le qualità. Consigliamo la regolare pulizia per rimuovere la polvere e lo sporco che con il tempo possono compromettere il colore del tessuto e indebolire le sue caratteristiche.

Extremely versatile, cotton can be washed at high temperatures without damaging its qualities. We recommend regular cleaning to remove dust and dirt which, over time, can compromise the fabric's colour and weaken the material's characteristics.



Trevira

Il Trevira CS è un tessuto altamente ignifugo che mantiene le sue qualità con l'invecchiamento e dopo il lavaggio sia a secco che in acqua. Per il corretto mantenimento, rimuovi rapidamente le macchie con un panno umido. Non asciugarlo.

Trevira CS is a highly fire-retardant material that keeps its qualities as it ages and after washing, whether dry cleaned or in water. For proper maintenance, quickly remove any stains with a damp cloth. Do not dry.



Lana / Wool

La regolare pulizia della lana è fondamentale per mantenerne le qualità e la durata. Elimina immediatamente eventuali macchie sul tessuto, asciugando i liquidi con un panno assorbente e i residui con una spugna bagnata in acqua calda e ben strizzata. Non strofinare il tessuto in modo aggressivo, perché si potrebbe rovinare il pelo. Evita di bagnare completamente la seduta in lana e prima di usarla, accertati che sia ben asciutta. Non utilizzare mai candeggina, ammoniac o sapone destinati alle superfici dure.

Cleaning wool regularly is essential to maintaining its qualities and durability. Immediately remove any stains from the fabric: mop liquids with an absorbent cloth and use a sponge soaked in hot water and then well wrung out to remove any residue. Do not rub the fabric aggressively. This can damage the wool. Avoid over-wetting the wool seat. After cleaning and before use, make sure the wool is completely dry. Never use bleach, ammonia or soaps for hard surfaces.



Poliestere / Polyester

Scegliamo tessuti in poliestere studiati per il mobile imbottito, ignifughi e resistenti alla lacerazione. Essendo una fibra sintetica, il poliestere è di facile manutenzione. Per rimuovere le macchie è sufficiente spazzolare il tessuto con un detergente neutro e successivamente lavarlo in lavatrice.

We select polyester fabrics designed for upholstered furniture. They are fire-retardant and resistant to tearing. Being a synthetic fibre, polyester is easy to maintain. To remove stains, simply brush the fabric with a neutral detergent and then machine wash.



Velluto / Velvet

Il velluto è tessuto nobile ed elegante, per questo la sua regolare pulizia e il suo corretto mantenimento sono fondamentali per mantenerne le raffinate qualità. Evita di lasciare il tessuto sotto la luce del sole e stai attento a non bagnarlo con troppa acqua. Per ripristinarlo, soffia del vapore sulla superficie utilizzando un ferro da stiro facendo attenzione a non toccare il tessuto. Quando asciutto, pettinalo con le mani. Non strofinare mai il velluto con forza e non stirarlo. *Velvet is a noble, elegant fabric which is why regularly cleaning and proper maintenance are essential for maintaining its refined qualities. Do not expose the fabric to direct sunlight. Be careful when wetting the fabric: do not use too much water. To restore the fabric, blow steam over the surface with a steam iron, being careful not to touch the fabric. When dry, comb with your hands. Never rub the velvet forcibly. Never iron velvet.*



Vetro / Glass

Il vetro utilizzato nei nostri prodotti è frutto di artigiani locali, veri e propri artisti custodi di un sapere che ha origini lontane. Per la sua pulizia consigliamo acqua e sapone liquido neutro, applicati possibilmente con un panno in microfibra per evitare eventuali graffi. *The blown-glass involved in our products is the result of local artisans, real artists who are custodians of a knowledge with distant origins. For the cleaning, we recommend the use of water and neutral soap, possibly applied with a microfibre cloth to avoid any scratches.*



Sostenibilità / Sustainability

Noi crediamo nelle piccole scelte di ogni giorno, ma anche in quelle grandi. Da sempre cerchiamo fornitori geograficamente vicini alla nostra azienda e se proprio dobbiamo allontanarci, il criterio della sostenibilità rimane sempre al primo posto. Quest'anno abbiamo fatto una revisione della nostra linea in termini green, con l'obiettivo di favorire materiali naturali, riciclati e soprattutto riciclabili.

We believe in little everyday choices, but also in the big ones. From the beginning we have been seeking for local suppliers and if we have to walk away, it is always the standard of sustainability to come first. This year, we made a green-review of our product line, with the aim of supporting the natural, recycled and renewable ones, firstly.



Infiammabilità / Flammability

Una crescente attenzione al consumatore ha portato l'industria del tessile a definire norme più stringenti per la sicurezza dei materiali, tanto nell'uso domestico quanto in ambito contract. Nei nostri prodotti troverai indicate tutte le sigle specifiche, per poterti orientare al meglio.

An increasing attention to the consumer, led the textile industry to establish more compelling safety regulations on materials, both in domestic and contract use. In all of our products, you will find specific acronyms for a better overview.



Qualità / Qualities

Scopri le principali caratteristiche di ogni materiale e tessuto, per poterli valorizzare in ogni tuo spazio. *Find out the main features of every material and fabric, so that to appreciate them even more.*

Categorie dei tessuti

/ Textile groups

A B C D E

LEGENDA E CERTIFICAZIONI / LEGENDA AND CERTIFICATIONS



Resistenza / Resistance

Ciò che rende invincibili i nostri prodotti: quello che ti è utile sapere per essere libero di utilizzarli senza timori. *What makes invincible our products: find all that you should know to freely use them.*



Composizione / Composition

Tutto quello che puoi trovare all'interno dei nostri filati e materiali: niente di più e niente di meno. *All that you can find in our yarns and materials: nothing else.*



Martindale

È uno degli indicatori più diffusi per testare la resistenza di tessuti e pelli. *It is one of the most widespread marker to test the resistance of textiles and leathers.*



Spessore / Thickness



Idrorepellente / Water resistant



Peso / Weight



Art Direction & Graphic design
Miniforms Creative Lab



Color Reproduction
GM Studio 1



Print

@miniformsofficial www.miniforms.com info@miniforms.com Via Ca' Corner Nord 4, Meolo (VE) Italy +39 0421 618255 MINIFORMS

Tutte le immagini sono inserite a scopo illustrativo. I prodotti possono subire modifiche. Le tonalità dei colori e le texture dei materiali fotografati possono essere differenti dalla realtà.
All images are for illustrative purposes only. Products might be subject to changes. Colors and texture of materials can be different from reality.

