

## WOOD TYPES

### SOLID WOOD

Obtained by cutting the tree log through a mechanic process. The aesthetic features and grain pattern depend on the wood essence. Solid wood is usually varnished (finishing process) and reproduces the typical essence shades.

### VENEERS

Veneer is obtained by using thin sheets of wood with different thicknesses which are taken from the best quality tree logs. Veneer layers are usually glued to a support and then stained accordingly. Veneer increases the quality of the products and delivers an excellent aesthetic result.



**P02**  
BLEACHED BEECH



**P12**  
SMOKE



**P15L**  
MATT BLACK



**P19W**  
NATURAL OAK



**P27**  
NATURAL



**P128**  
WENGE



**P132**  
GRAPHITE



**P173**  
GRAPHITE



**P201**  
WALNUT



**P507**  
BRUSHED OPTIC WHITE

---

### MELAMINE FINISHES – THERMAL STRUCTURED SURFACES

Obtained by gluing plain coloured or patterned sheets which are spread on the visible layer with melamine resins on a wooden grain panel (support). Melamine coated panels allow a great variety of aesthetic solutions, they are durable and have excellent stability and resistance to wear and tear.



**P17W**  
DECO NOUGAT



**P18W**  
BETON GREY



**P22W**  
MATERICO WHITE



**P35W**  
VINTAGE



**P47W**  
TOBACCO OAK



**P49W**  
NATURAL OAK



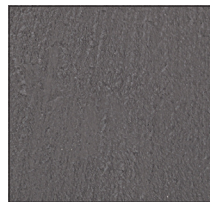
**P50W**  
OXIDE BRONZE



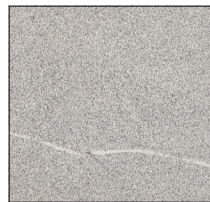
**P56W**  
BRUSHED WHITE



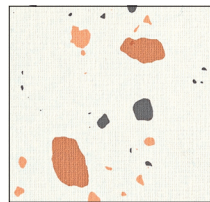
**P60W**  
TERMOCOTTO



**P63W**  
DARK CEMENT



**P84W**  
PIASENTINA STONE



**P85W**  
TERRAZZO



**P262**  
WHITE

## WOOD TYPES

### LAMINATED FINISHES

Obtained by pressure gluing various layers of fibrous material soaked in thermosetting resins and spread on the visible layer (plain coloured or patterned) with melamine resins. They are then glued on a wooden grain panel (support). Laminated panels allow a great variety of aesthetic solutions and have excellent stability, resistance to wear and tear, collisions, abrasion and humidity.

### MULTILAYER LAMINATE TOPS (HPL)

This multilayer laminate is a 10 mm thick, self-supporting material formed with different layers of fibrous material absorbed with thermosetting resins and pressed together under high pressure. The external surface of the panel is a decorative laminate made with a base of thermosetting resins.



**P27W**  
GRAPHITE

**P28W**  
GREY

**P36W**  
NOUGAT

**P50W**  
OXIDE BRONZE

**P58W**  
SALT WHITE



**P69W**  
BLACK

**P94**  
MATT OPTIC WHITE

**P421**  
BLACK

**P510**  
SLATE GREY

**P810**  
CEMENT

---

## METALS



**P05**  
BRUSHED METAL

**P74**  
POLISHED ALUMINIUM

**P77**  
CHROMED

**P83**  
SATIN FINISHED ALUMINIUM

**P95**  
SATIN FINISHED STEEL

**P309**  
SINGLE-LAYER SAT SIN FIN. STEEL

**P33L**  
PAINTED BRASS

---

## GLASS OPTIONS



**GB**  
BLACK

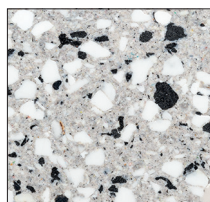
**GEW**  
EXTRACLEAR

**GTA**  
TAUPE

**GTR**  
TRANSPARENT

---

## ECO-STONE



**P1E**  
SALT PEPPER

Made of recycled material, obtained from the recovery of fiberglass and other post-consumption fibre-reinforced composites. They are re-aggregated at high pressure ensuring the product robustness and stability in all environmental conditions. Eco-sustainable and recyclable material at the end of life.

Slight differences in the shade of the tops and in the size of the grains are not to be considered a defect, but a characteristic of the material.

## CERAMIC

### LAMINATED CERAMIC-GLASS

The ceramic-glass top is a self-holding product manufactured by coupling one ceramic plate (porcelain tile) to a tempered floating glass thanks to a special process carried out in autoclave.

The ceramic plate thickness is 3 mm and is coupled with an 8 mm thick glass (for a total of 11 mm).

The porcelain tile is a ceramic material obtained using a mixture of stoneware composed by clay and valuable raw materials, which are mixed, body tinted, compacted whilst high pressure is applied and finally fired at 1200 °C.

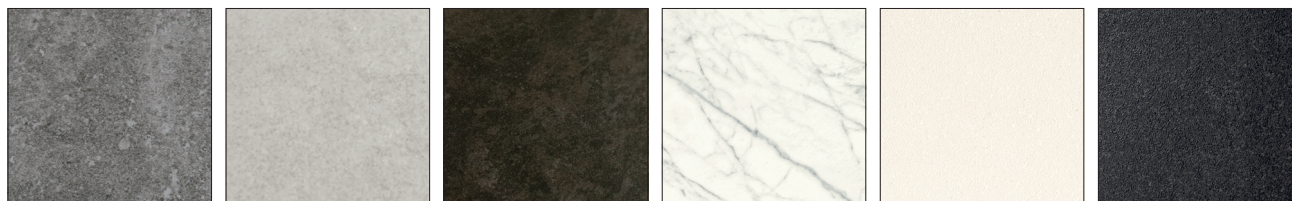
The porcelain tile working surface features exceptional performances in terms of scratch, impact, stain, thermal shock and chemical resistance. It is easy to clean and very hygienic because it does not absorb liquids and does not release harmful substances.

### LAMINATED CERAMIC-WOOD

The ceramic-wood top is obtained by applying a layer of ceramic (gres porcelain tile) onto a panel made of wooden particles with a special gluing technique.

The porcelain tile is a ceramic material obtained using a mixture of stoneware composed by clay and valuable raw materials, which are mixed, body tinted, compacted whilst high pressure is applied and finally fired at 1200 °C.

The porcelain tile working surface features exceptional performances in terms of deep abrasion, stain, thermal shock and chemical resistance. It is easy to clean and very hygienic because it does not absorb liquids and does not release harmful substances.



**P1C**  
CEMENT

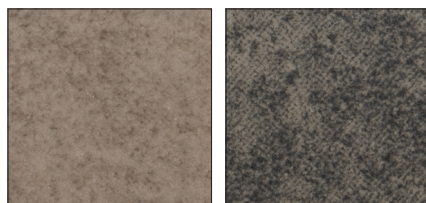
**P5C**  
SALT WHITE

**P6C**  
OXIDE BLACK

**P17C**  
WHITE ALPI MARBLE

**P117**  
WHITE

**P133**  
STONE GREY



**P166**  
NOUGAT

**P321**  
LEAD GREY

## PLASTIC MATERIALS

### TRANSPARENT PLASTICS



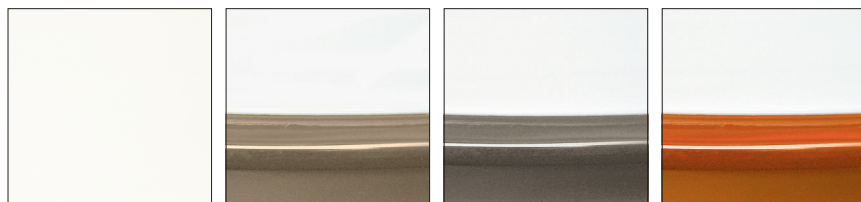
**P266**  
SMOKE GREY

**P848**  
TRANSPARENT

**P54P**  
THYME GREEN

**P55P**  
SAFFRON YELLOW

### GLOSSY PLASTICS



**P799**  
GLOSSY OPTIC WHITE

**P799-P11P**  
GLOSSY NOUGAT

**P799-P837**  
GLOSSY TAUPE

**P799-P851**  
GLOSSY TRANSPARENT ORANGE

	- I Manutenzione e pulizia	- F Entretien et nettoyage	- J メンテナンスとクリーニング
	- GB Maintenance and cleaning	- RUS техническое обслуживание и очистку	
	- D Wartung und Reinigung	- E Mantenimiento y limpieza	

<p><b>OK</b></p>	<p><b>NO</b></p>
------------------	------------------

- I Usare acqua e sapone neutro	- E Use un jabón suave y agua
- GB Use mild soap and water	- J 中性洗剤と水を使用
- D Verwenden Sie eine milde Seife und Wasser	
- F Utiliser un savon doux et de l'eau	
- RUS Использовать нейтральное мыло и воду	

In order to guarantee product durability, clean the plastic elements by using lukewarm water and mild soap only. Do not use ethyl alcohol or detergents that contain even small amounts of acetone, trichloroethylene or ammonia or solvents in general. Do not use any universal degreaser. Do not use abrasive products.

## MATT FINISHES



**P2L**  
MATT PALE PINK

**P3L**  
MATT OXIDE RED

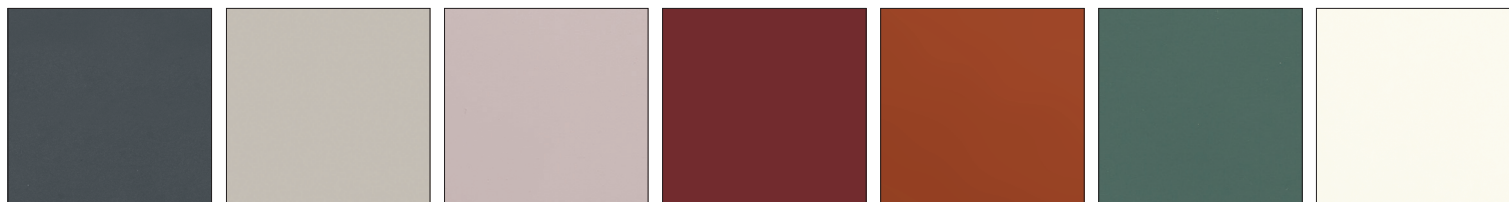
**P6L**  
MATT FOREST GREEN

**P7L**  
MATT SAFFRON YELLOW

**P8L**  
MATT THYME GREEN

**P9L**  
MATT LEMON YELLOW

**P15**  
MATT BLACK



**P16**  
MATT GREY

**P21L**  
MATT HEMP

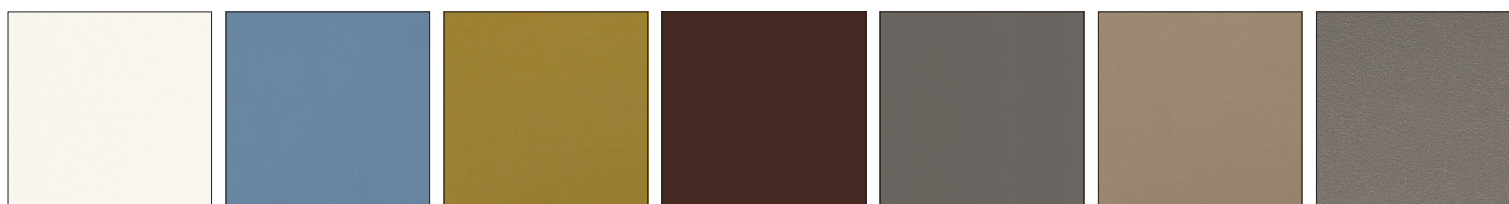
**P23L**  
MATT PALE PINK

**P24L**  
MATT BURGUNDY

**P35L**  
MATT ORANGE

**P36L**  
MATT SAGE

**P39**  
MATT WHITE



**P94**  
MATT OPTIC WHITE

**P100**  
MATT SKY BLUE

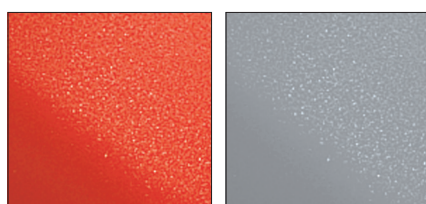
**P139 | P973**  
MATT MUSTARD YELLOW

**P159**  
MATT COFFEE

**P176 | P900**  
MATT TAUPE

**P328**  
MATT NOUGAT

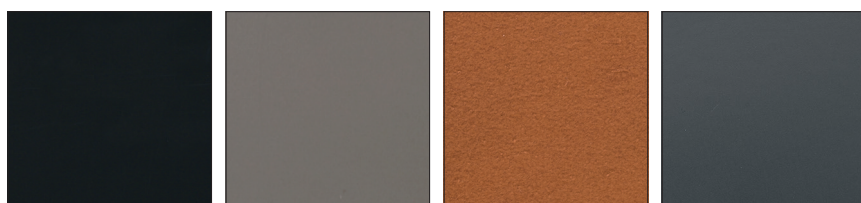
**P900**  
MATT TAUPE



**P946**  
MATT RED

**P956**  
MATT GREY

## REGENERATED LEATHER | SOFT LEATHER



**315**  
BLACK

**D03**  
TAUPE

**R04**  
COGNAC

**R16**  
GREY



**683** ♻️  
BLACK

**705** ♻️  
OPTIC WHITE

**D04** ♻️  
TAUPE

**L16** ♻️  
GREY

### REGENERATED LEATHER

Regenerated leather is the result of the mixture of leather off-cuts (min 60%) and other natural materials. Regenerated leather is finished with the same procedure used for leather.

### SOFT LEATHER

Leather comes from the finest part of the European ox skin (the core) cut in different thicknesses depending on the requests and then tanned. The external finish is obtained by using water based colours.

## WASHABLE SYNTHETIC FABRICS

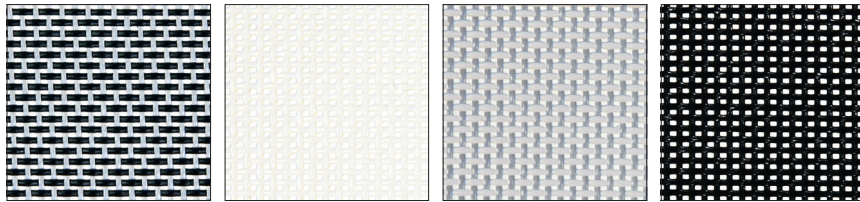
Washable synthetic fabrics should be cleaned periodically in order to maintain their appearance and prevent build-up of dirt and contaminants.

Any stain, spills or soiling should be cleaned up promptly to prevent the possibility of permanent staining.

Use soft soapy solutions or special cleaning products for washable synthetic fabrics to remove stains on the surface of the material. Remove only with a damp white cloth.

Lacquers, strong cleaners or acetone cause immediate damage and contribute to the deterioration of the material. The use of such cleaners is at owner's risk. Certain clothing and accessory dyes (such as those used on denim jeans) may migrate to lighter colours. This phenomenon is increased by humidity and temperature and is irreversible. Calligaris S.p.A. will not assume responsibility for dye transfer caused by external contaminants and possible permanent staining caused by this phenomenon.

**NET** | 77% PVC - 23% PL gr/m<sup>2</sup> 560 | Martindale >100.000 cicli/rubs - EN ISO 12947-2



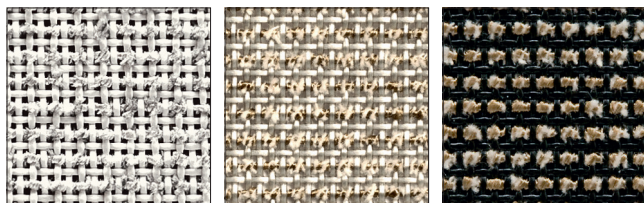
**450**  
STEEL

**459**  
OPTIC WHITE

**460**  
GREY

**461**  
BLACK

**NET NANCY** | 49% PVC - 42% PL - 9% CO gr/m<sup>2</sup> 587 | Martindale >100.000 cicli/rubs - EN ISO 12947-2

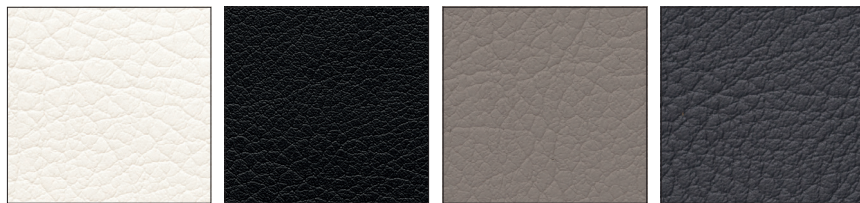


**AV0**  
WHITE

**AV1**  
CORD

**AV7**  
SAHARA

**EKOS** | 75% PVC - 22 PL% - 3% PU gr/m<sup>2</sup> 680 | Martindale >100.000 cicli/rubs - EN ISO 5470-2 Met.1



**G8K**  
WHITE

**G8N**  
BLACK

**G8Q**  
TAUPE

**G8R**  
GREY

**VINTAGE** | 55% PU - 29% CO - 16% PL gr/m<sup>2</sup> 393 | Martindale >100.000 cicli/rubs - EN ISO 5470-2 Met.1



**S0A**  
DESERT

**S0B**  
TOBACCO

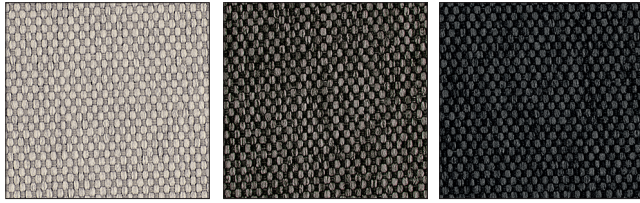
**S0C**  
EBONY

**S0W**  
ASH GREY

**S0X**  
HEMP

# FABRICS

**BERNA** | 100% PL gr/m<sup>2</sup> 350 | Martindale >100.000 cicli/rubs - EN ISO 12947-2

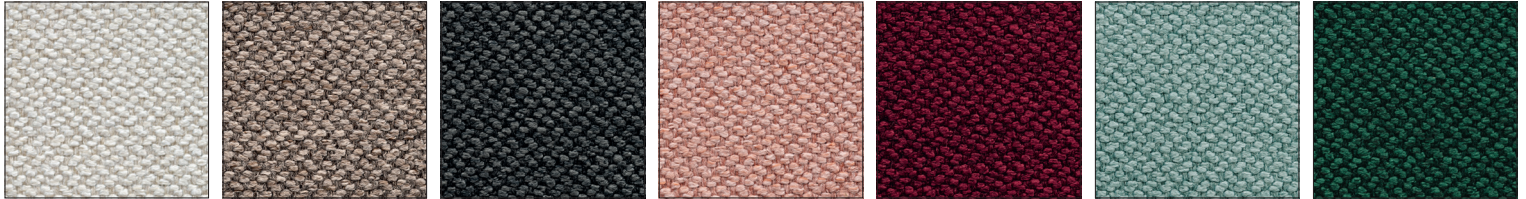


**7SA3**  
SAND

**7SA6**  
TAUPE

**7SB2**  
SMOKE GREY

**CROS** | 100% PL gr/m<sup>2</sup> 390 | Martindale >100.000 cicli/rubs - EN ISO 12947-2



**SKZ**  
SAND

**SLA**  
TAUPE

**SLB**  
BLACK

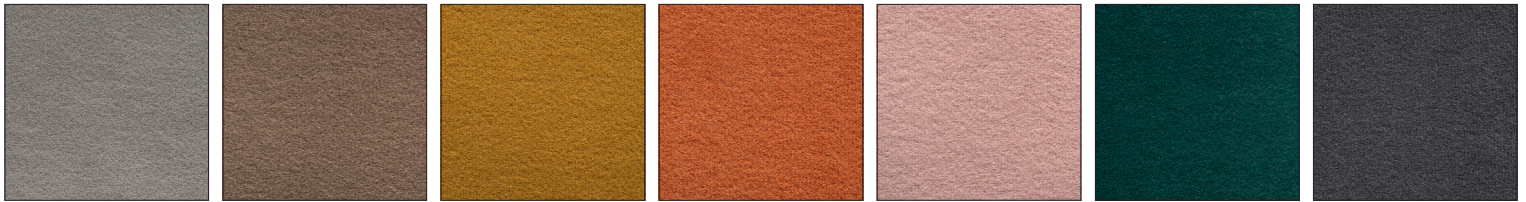
**SLE**  
PINK

**SLF**  
BURGUNDY

**SLG**  
THYME GREEN

**SLH**  
FOREST GREEN

**MAT** | 100% PL gr/m<sup>2</sup> 457 | Martindale 60.000 cicli/rubs - EN ISO 12947-2



**SLJ**  
SAND

**SLK**  
CAMEL BROWN

**SLL**  
LEMON YELLOW

**SLM**  
SAFFRON YELLOW

**SLN**  
PINK

**SLP**  
FOREST GREEN

**SLQ**  
GREY

**VENICE** | 100% PL gr/m<sup>2</sup> 430 | Martindale >100.000 cicli/rubs - EN ISO 12947-2



**S0F**  
SAND

**S0K**  
BRICK RED

**S0L**  
ASH GREY