

CILINDRO LOW

Design Ollen Pal



- Collezione di tavoli dal design pulito ed essenziale. L'elemento caratterizzante è il basamento cilindrico in metallo verniciato, monocolore o bicolore, che nella versione con il piano in marmo si esalta ulteriormente grazie al prezioso anello inferiore in marmo che si coordina con il piano. Disponibile con piano in cristallo, legno o ceramica, nelle forme tonde dove può essere abbinato a scelta un Lazy Susan, rettangolare o sagomato. Disponibile anche con piani dalle dimensioni generose, grazie al doppio basamento. CILINDRO LOW: collezione di tavolini che sono la naturale evoluzione del tavolo, base monocolore o bicolore abbinata a piani tondi in cristallo, legno, ceramica e marmo. Colorazioni diverse accoppiate che creano combinazioni uniche.

Collection of tables with a clean and essential design. The characterizing element is the cylindrical metal base painted monocolour or bicolor. In the marble top version, the base is enhanced by a precious lower marble ring that matches the table top. Available with a glass, wood or ceramic top, in round that can be combined with a Lazy Susan, rectangular or in a shaped form. Thanks to the double base, it is also available with generously sized tops. CILINDRO LOW: collections of coffee tables, that are the natural evolution of the table, metal painted monocolour or bicolor base, paired with round tops in glass, wood, ceramic or marble. Different colours matched to create unique combinations.

eforma
DESIGN ITALIANO

CILINDRO LOW

Design Ollen Pal



eforma
DESIGN ITALIANO

CILINDRO LOW

Design Ollen Pal



CILINDRO LOW_top marmo tavolini, Ø cm 60x h 42, base: verniciato bronzo, piano: Marmo lucido Emperador.

CILINDRO LOW_marble top coffee tables, Ø cm 60x h 42, base: bronze painted, top: glossy marble Emperador



CILINDRO LOW_top ceramica tavolini, Ø cm 60x h 42, Ø cm 100x h 33, base: verniciato bicolore oro/nero, piano: ceramica Portoro opaco.

CILINDRO LOW_ceramic top coffee tables, Ø cm 60x h 42, Ø cm 100x h 33, base: bicolor gold/black painted, top: matt ceramic Portoro.

eforma
DESIGN ITALIANO

Informazioni tecniche / Technical informations

Descrizione tecnica / Technical description

CILINDRO LOW_top cristallo

Tavolino con base in metallo verniciato monocoloro o bicolore e piano in cristallo temperato verniciato nero lucido, spessore 10 mm.

CILINDRO LOW_top legno

Tavolino con base in metallo verniciato monocoloro o bicolore e piano in legno impiallacciato con bordi obliqui, spessore 20 mm.

CILINDRO LOW_top ceramica

Tavolino con base in metallo verniciato monocoloro o bicolore e piano in ceramica spessore 16 mm. Vetro temperato spessore 10 mm, accoppiato con ceramica spessore 6 mm

CILINDRO LOW_top marmo

Tavolino con base in metallo verniciato monocoloro o bicolore e piano in marmo lucido con bordi obliqui, spessore 20 mm.

CILINDRO LOW_glass top

Coffee table with metal base painted monocolor or bicolor and top in tempered glossy painted black glass, 10 mm thickness.

CILINDRO LOW_wood top

Coffee table with metal base painted monocolor or bicolor and top in veneered wood with oblique edges, 20 mm thickness.

CILINDRO LOW_ceramic top


Coffee table with metal base painted monocolor or bicolor and top in ceramic 16 mm thickness. 10 mm thick tempered glass, coupled with a 6 mm thick ceramic top.

CILINDRO LOW_marble top

Coffee table with metal base painted monocolor or bicolor and top in glossy marble with oblique edges, 20 mm thickness.

Dimensioni e imballaggi / Dimensions and packaging



Misure CM / Size CM	 Packaging
○ Ø 79x33h (top ceramica/ceramic top)	2 box = 0,14 m ³
○ Ø 80x33h	2 box = 0,14 m ³
○ Ø 100x33h	2 box = 0,17 m ³
○ Ø 119x33h (top ceramica/ceramic top)	2 box = 0,20 m ³
○ Ø 120x33h	2 box = 0,20 m ³
○ Ø 60x42h	2 box = 0,07 m ³

Finiture / Finishes

Finiture base / base finishes

Base metallo verniciato monocolore:

Nero V01 Bronzo V05
Titanio V04 Oro V06

Metal base painted monocolor:

*Black V01 Bronze V05
Titanium V04 Gold V06*

Base verniciato bicolore:



A Oro V06 Titanium V04 Oro V06
B Nero V01 Nero V01 Bronzo V05

Metal base painted bicolor:



*A Gold V06 Titanium V04 Gold V06
B Black V01 Black V01 Bronze V05*



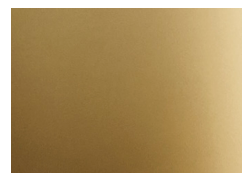
V01 - Nero / Black



V04 - Titanio / Titanium



V05 - Bronzo / Bronze



V06 - Oro / Gold

Finiture / Finishes

Finiture piano / Top finishes

Piano in cristallo temperato verniciato spessore 10 mm.

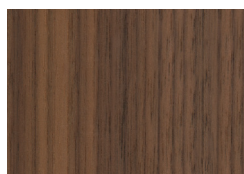
Tempered glossy painted glass 10 mm thickness



CR1 - Cristallo
Verniciato Nero
Lucido / *Glossy Black
painted Glass*

Piano in legno impiallacciato con bordi obliqui spessore 20 mm

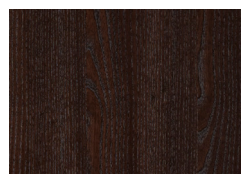
Veneered wood top with oblique edges 20 mm thickness



NC - Noce Canaletto /
Canaletto Walnut



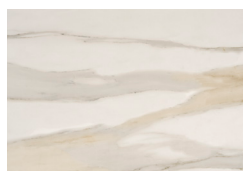
FNR - Frassino Tinto
Nero /
Black stained Ash



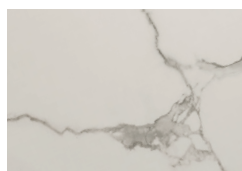
FTM - Frassino Tinto
Testa di Moro /
*Dark Brown stained
Ash*

Piano in ceramica spessore 16 mm, vetro temperato 10 mm accoppiato con ceramica spessore 6 mm

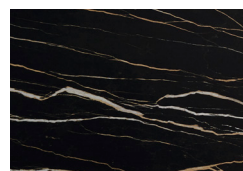
*Ceramic top 16 mm thickness
10 mm thick tempered glass coupled with a 6 mm thick
ceramic top*



CM1 - Calacatta
Gold Lucido / *Glossy
Calacatta Gold*



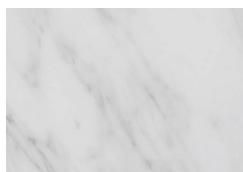
CM2 - Statuario
Lucido / *Glossy
Statuario*



CM3 - Portoro Opaco /
Matt Portoro

Piano in marmo lucido con bordi obliqui spessore 20 mm

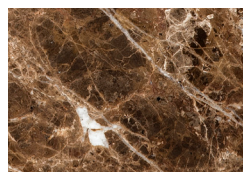
Glossy marble top with oblique edges 20 mm thickness



M01 - Carrara



M02 - Nero Marquina



M03 - Emperador