

Finiture top / Top finishes

Specchio/ Mirror



SFSP SBSP

Specchio acidato/ Frosted mirror

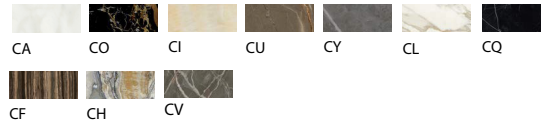


SFAC SBAC

Ceramica CE1/ Ceramic CE1



Ceramica CE2/ Ceramic CE2



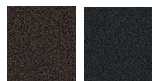
Materia



MESP MBSP

Finiture struttura / Structure finishes

Metallo laccato/ Lacquered metal



GC GN

Metallo brunito/ Burnished metal



BR