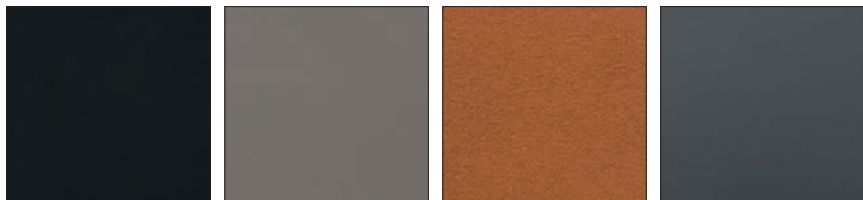


REGENERATED LEATHER - SOFT LEATHER



315
BLACK

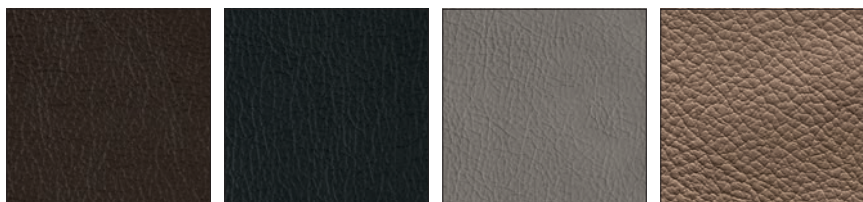
D03
TAUPE

R04
COGNAC

R16
GREY

REGENERATED LEATHER

Regenerated leather is the result of the mixture of leather off-cuts (min 60%) and other natural materials. Regenerated leather is finished with the same procedure used for leather.



470
COFFEE

683
BLACK

D04
TAUPE

L01
ANTELOPE BROWN

SOFT LEATHER

Calligaris uses leather which comes from the finest part of the European ox skin (the core) cut in different thicknesses depending on the requests and then tanned. The external finish is obtained by using water based colours.



L08
CREAM

L16
GREY

WASHABLE SYNTHETIC FABRICS

Washable synthetic fabrics should be cleaned periodically in order to maintain their appearance and prevent build-up of dirt and contaminants.

Any stain, spills or soiling should be cleaned up promptly to prevent the possibility of permanent staining.

Use soft soapy solutions or special cleaning products for washable synthetic fabrics to remove stains on the surface of the material. Remove only with a damp white cloth. Lacquers, strong cleaners or acetone cause immediate damage and contribute to the deterioration of the material. The use of such cleaners is at owner's risk. Certain clothing and accessory dyes (such as those used on denim jeans) may migrate to lighter colours. This phenomenon is increased by humidity and temperature and is irreversible. Calligaris S.p.A. will not assume responsibility for dye transfer caused by external contaminants and possible permanent staining caused by this phenomenon.

SKUBA | 84% PVC - 10% PL - 6% PU gr/m² 700 | Martindale >100.000 cicli/rubs - EN ISO 5470-2 Met.1



* Clean by using lukewarm water and mild soap only.



S92
OPTIC WHITE

S93
BLACK

S95
TAUPE

S96
GREY

SOFTER | 75% PVC - 22% PL - 3% PU gr/m² 680 | Martindale >100.000 cicli/rubs - EN ISO 12947-2



SLR
MUD BROWN

SLS
COGNAC

SLT
TOBACCO

WASHABLE SYNTHETIC FABRICS

VINTAGE | 56% PU - 29% CO - 16% PL gr/m² 393 | Martindale >100.000 cicli/rubs - EN ISO 5470-2 Met.1



SOA
DESERT

SOB
TOBACCO

SOC
EBONY

SOW
ASH GREY

SOX
HEMP

FABRICS

BOUCLÉ | 37% PL - 21% PC - 19% VI - 14% CO - 8% LI - 1% PA gr/m² 522 | Martindale 40.000 cicli/rubs - EN ISO 12947-2

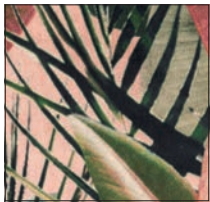


SLV
HEMP

SLW
ANTHRACITE GREY

SLX
TAUPE

LEAVES | 100% PL gr/m² 385

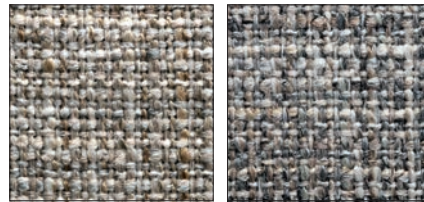


Martindale >120.000 cicli/rubs - EN ISO 12947-2



S7E
PINK

KALIX | 54% PC - 46% PL gr/m² 440




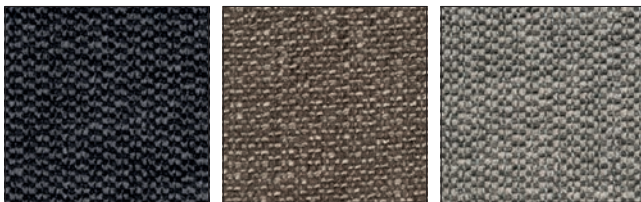
Martindale 40.000 cicli/rubs - EN ISO 12947-2



S8Q
SAND

S8S
GREY

MALMO |  79% PL - 16% CO - 5% PC gr/m² 442 | Martindale >40.000 cicli/rubs - EN ISO 12947-2

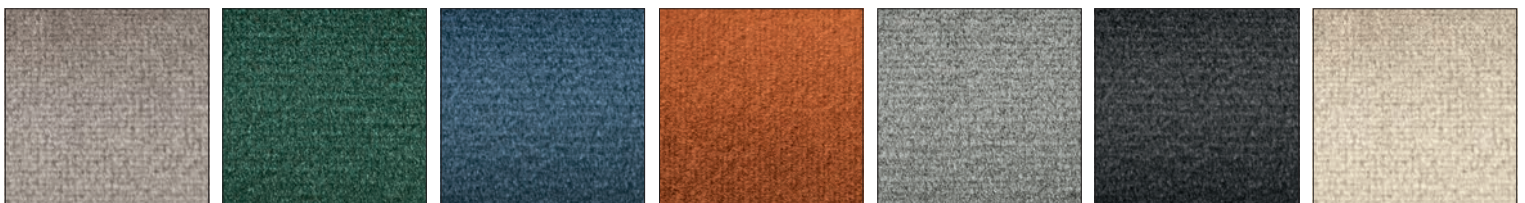


SQ1
ANTHRACITE GREY

SQ3
CORD

SQ4
TAUPE

VENICE | 100% PL gr/m² 430 | Martindale >100.000 cicli/rubs - EN ISO 12947-2



SOF
SAND

SOH
FOREST GREEN

SOJ
OCEAN BLUE

SOK
BRICK RED

SOL
ASH GREY

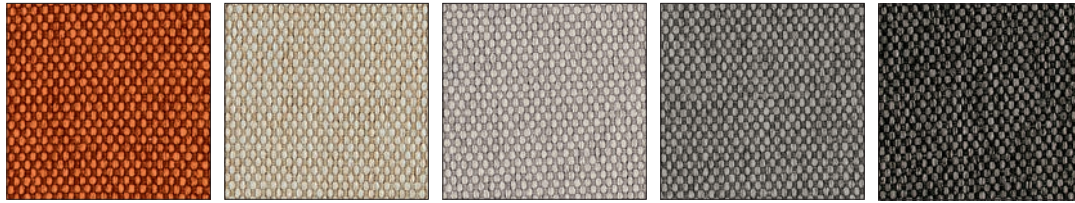
SOY
BLACK

SOZ
HEMP



MADE TO ORDER PROGRAM - CATEGORY A

BERNA | 100% PL gr/m² 350 | Martindale >100.000 cicli/rubs - EN ISO 12947-2



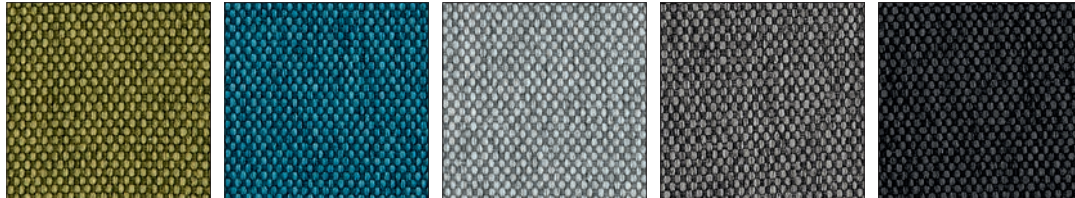
7S0V
ORANGE

7SA2
ECRU

7SA3
SAND

7SA4
CLAY BROWN

7SA6
TAUPE



7SA7
GREEN

7SA8
BLUE

7SB0
CERULEAN

7SB1
GREY

7SB2
SMOKE GREY

VENICE | 100% PL gr/m² 430 | Martindale >100.000 cicli/rubs - EN ISO 12947-2



S0F
SAND

S0G
SOIL BROWN

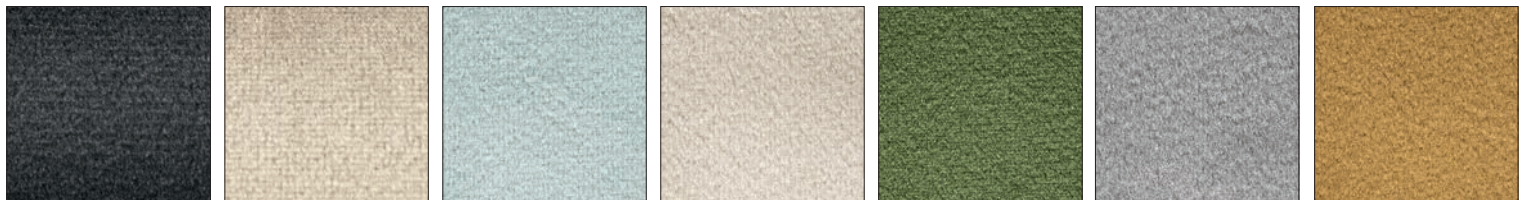
S0H
FOREST GREEN

S0J
OCEAN BLUE

S0K
BRICK RED

S0L
ASH GREY

S0U
PINK



S0Y
BLACK

S0Z
HEMP

SVX
ICE

SVY
BEIGE

SVZ
GREEN

SWA
LIGHT GREY

SWB
MUSTARD YELLOW

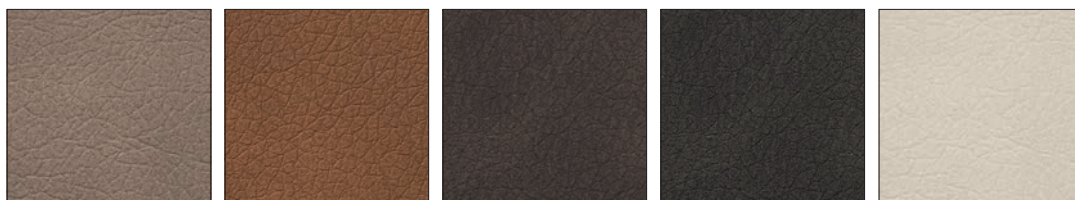


SWC
PALE PINK

SWD
AMBER

SWE
BLUE

VINTAGE | 55% PU - 29% CO - 16% PL gr/m² 393 | Martindale >100.000 cicli/rubs - EN ISO 5470-2 Met.1



S0A
DESERT

S0B
TOBACCO

S0C
EBONY

S0W
ASH GREY

S0X
HEMP



MADE TO ORDER PROGRAM - CATEGORY C

DENVER



Teflon™ is a registered trademark of The Chemours Company FC LLC, used under license by Calligaris S.p.a.

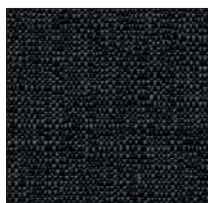
41% VI - 21% PL - 18% LI - 15% CO - 4% PC - 1% AF gr/m² 327 | Martindale 20.000 cicli/rubs - EN ISO 12947-2



A02
SAND



A03
CORD

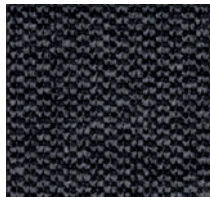


A08
ANTHRACITE GREY

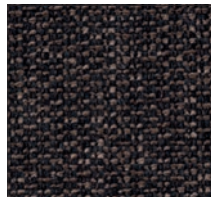
MALMO



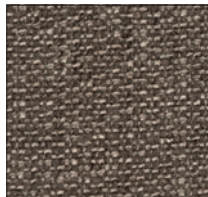
79% PL - 16% CO - 5% PC gr/m² 442 | Martindale >40.000 cicli/rubs - EN ISO 12947-2



SQ1
ANTHRACITE GREY



SQ2
COFFEE



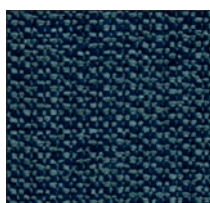
SQ3
CORD



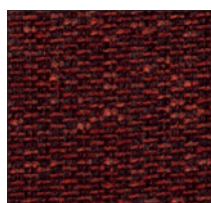
SQ4
TAUPE



SQ5
SAND



SQ6
AQUAMARINE



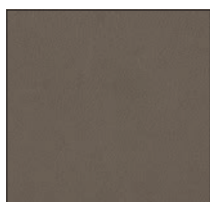
SQ7
RED



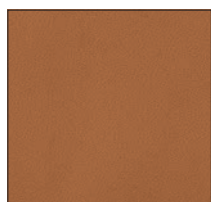
SQ8
MUSTARD YELLOW

SOFTER

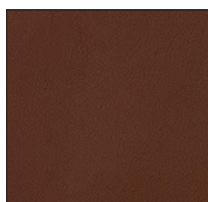
75% PVC - 22% PL - 3% PU gr/m² 680 | Martindale >100.000 cicli/rubs - EN ISO 12947-2



SLR
MUD BROWN



SLS
COGNAC



SLT
TOBACCO



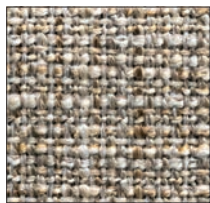
SLU
BURGUNDY



MADE TO ORDER PROGRAM - CATEGORY D

KALIX

54% PC - 46% PL gr/m² 440 | Martindale 40.000 cicli/rubs - EN ISO 12947-2



S8P
ECRU



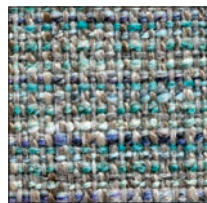
S8Q
SAND



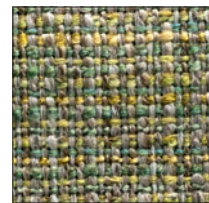
S8R
BROWN



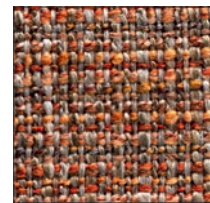
S8S
GREY



S8T
BLUE



S8U
GREEN




S8V
RED

 **MADE TO ORDER PROGRAM - CATEGORY D**

SKUBA | 84% PVC - 10% PL - 6% PU gr/m² 700 | Martindale >100.000 cicli/rubs - EN ISO 5470-2 Met.1



 * Clean by using lukewarm water and mild soap only.



S92
OPTIC WHITE

S93
BLACK

S94
COFFEE

S95
TAUPE

S96
GREY



S98
NOUGAT

S99
MUSTARD YELLOW

SA0
SKY BLUE

 **MADE TO ORDER PROGRAM - CATEGORY E**

BOUCLÉ | 37% PL - 21% PC - 19% VI - 14% CO - 8% LI - 1% PA gr/m² 522 | Martindale 40.000 cicli/rubs - EN ISO 12947-2







SLV
HEMP

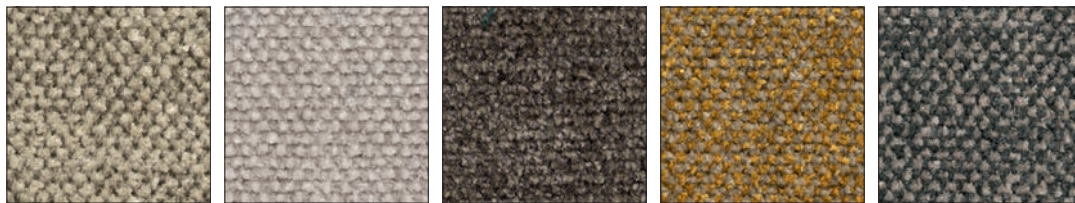
SLW
ANTHRACITE GREY

SLX
TAUPE

SSQ
BRICK RED

CULLINAN | 40% VI - 35% CO - 25% PC gr/m² 600 | Martindale 30.000 cicli/rubs - EN ISO 12947-2





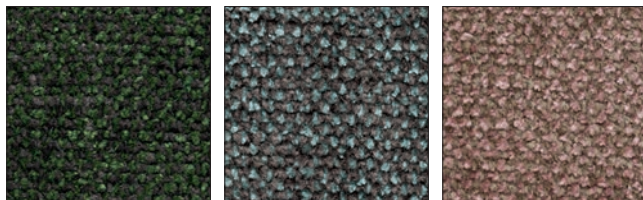
ST8
ECRU

ST9
WHITE

SU0
BROWN

SU1
YELLOW

SU2
GREY



SU3
GREEN

SU4
BLUE

SU5
PINK



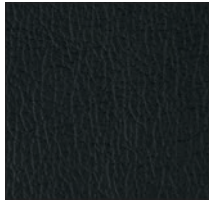
MADE TO ORDER PROGRAM - CATEGORY F

ESPRIT SOFT LEATHER

Calligaris uses leather which comes from the finest part of the European ox skin (the core) cut in different thicknesses depending on the requests and then tanned. The external finish is obtained by using water based colours.



470
COFFEE
CAFÉ



683
BLACK
NEGRO



705
OPTIC WHITE
BLANCO ÓPTICO



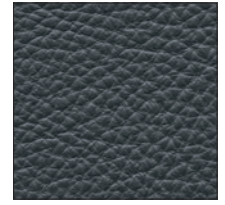
D04
TAUPE
TÓRTOLA



L01
ANTELOPE BROWN
ANTÍLOPE



L08
CREAM
VAINILLA



L16
GREY
GRIS



MADE TO ORDER PROGRAM - CATEGORY G

EMOTION STANDARD LEATHER

Natural half-grain cowhide, finished thickness of 1.2 - 1.4 mm. Through dyed; finishing with resins and pigments. Article with a soft, waxy feel and semi-matt appearance.



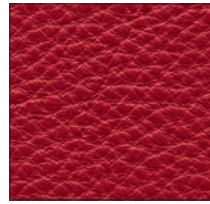
L1A
ZINC



L1L
BUCKSKIN



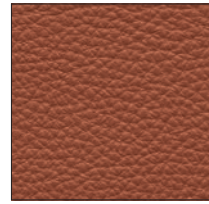
L1U
HEZELNUT



L2V
SIAM



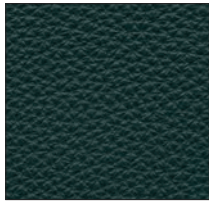
L3A
AUBERGINE



L3E
JASPER



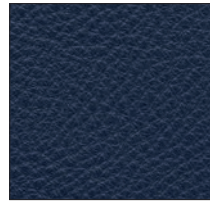
L3Q
EBONY



L4F
BOTTLE



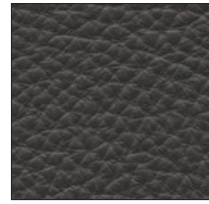
L4J
PACIFIC



L4L
INDIGO



L5G
GRAYSTONE



L5H
GRAYSHADOW



EMOTION EXTENDED LEATHER

Natural half-grain cowhide, finished thickness of 1.2 - 1.4 mm. Through dyed; finishing with resins and pigments. Article with a soft, waxy feel and semi-matt appearance.



L1B
PENICILLIN



L1C
PAPYRUS



L1D
SOUL WHITE



L1E
PORCELAIN



L1F
IVORY



L1G
SAND



L1H
DESERTSTORM



L1J
CAFFELLATTE



L1K
MOUTON



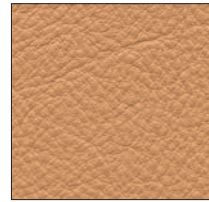
L1M
CLAY



L1N
AVANA



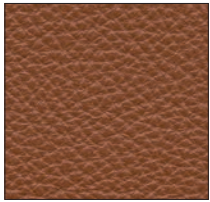
L1P
TAN



L1Q
LION



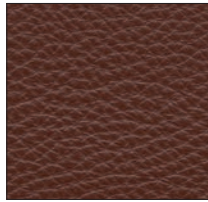
L1R
CINNEMON



L1S
SWAMP



L1T
COTTO



L1V
ECUREIL



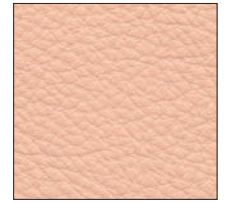
L1W
BRAUN



L1X
DASH



L1Y
MARBLE



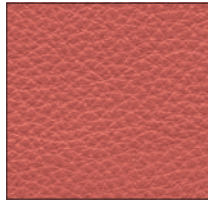
L1Z
PILL



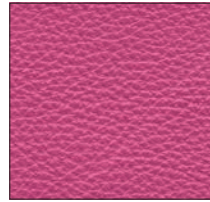
L2A
CORIANDER



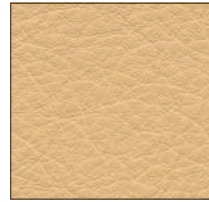
L2B
FACEPOWDER



L2C
FOND-DE-TEIN



L2D
ENERGY



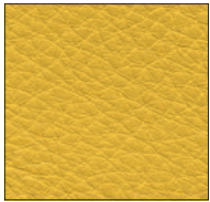
L2E
LIGHT



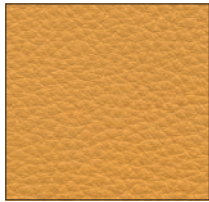
L2F
CIQUITA



L2G
PERGAMENA



L2H
LEMON GRASS



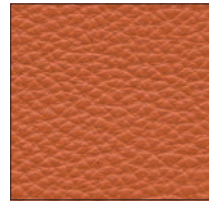
L2J
CARIOCA



L2K
PEACH



L2L
SUNSET



L2M
CLAW



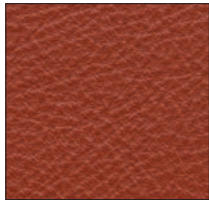
L2N
REDORANGE



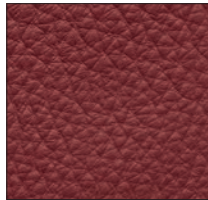
L2P
BEGONIA



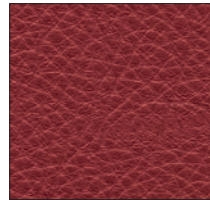
L2Q
POT-PURRY



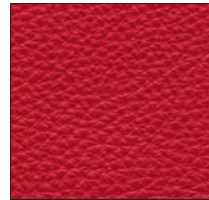
L2R
HENNA



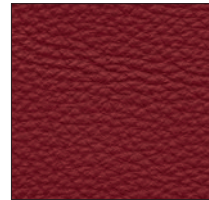
L2S
BLOOD



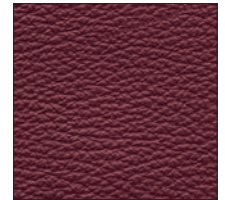
L2T
ANTIQUÉ



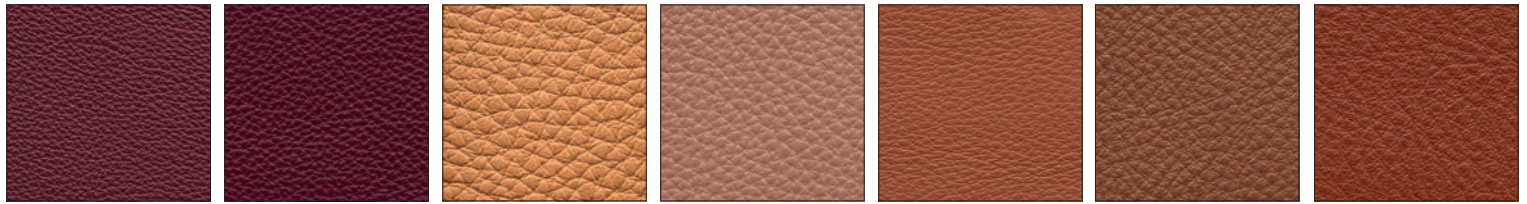
L2U
PARROT



L2W
PHONEBOX



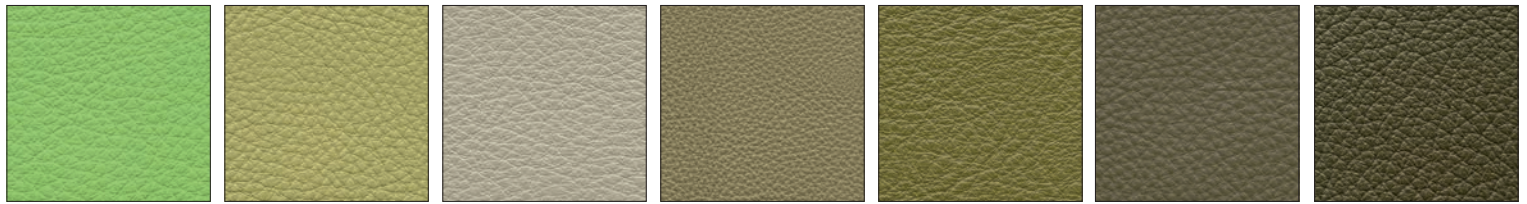
L2X
BOMBAY



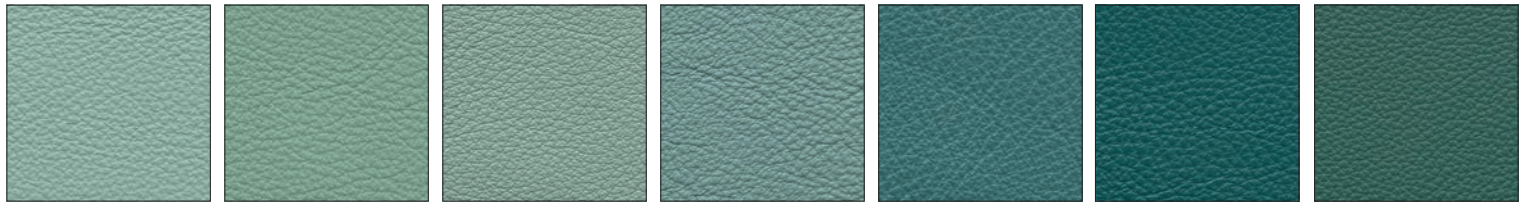
L2Y WINE **L2Z** RIBES **L3B** DUNE **L3C** POTTERY **L3D** VOLCANO **L3F** HORSE **L3G** CROCUS



L3H CARRUBO **L3J** ANTILOP **L3K** ACAJOU **L3L** PEATMOOS **L3M** CHESTNUT **L3N** CIOCCO **L3P** ROOT



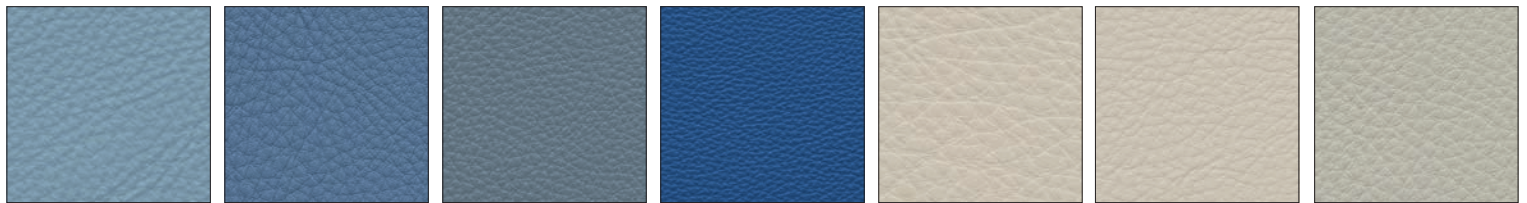
L3R S.BREEZE **L3S** LIME **L3T** MOUD **L3U** TERRAGON **L3V** ALOE **L3W** CAMOUFLAGE **L3X** BIRCH



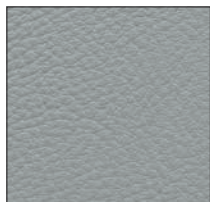
L3Y AQUA AZUL **L3Z** MALDIVE **L4A** OXIDE **L4B** LICHENE **L4C** OTTANIO **L4D** BLU PETROL **L4E** CEDAR GREEN



L4G POLINESIA **L4H** TURQUOISE **L4K** OCEANIA **L4M** DEEP **L4N** PLASTER **L4P** CRUSHED ICE **L4Q** MORNING FOG



L4R NORTH POLE **L4S** SANTORINI **L4T** STEEL BIRD **L4U** MATISSE **L4V** PEARL **L4W** LAMB **L4X** CINDER



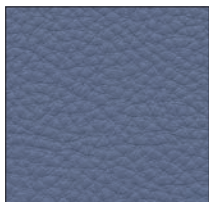
L4Y
CIMENT



L4Z
WISTERIA



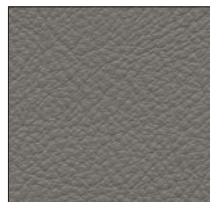
L5A
MILKA



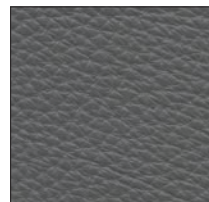
L5B
LAVANDER



L5C
TURTLEDOVE



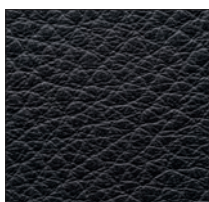
L5D
SMOKE



L5E
IRON



L5F
GREY



L5J
BLACK INK



The mark of responsible forestry

Modello certificato Forest Stewardship Council®
Forest Stewardship Council® certified Model

Richiedi i prodotti certificati FSC®
Ask for FSC® certified products

COMPANY WITH
MANAGEMENT SYSTEM
CERTIFIED BY DNV
ISO 9001 • ISO 14001

All Calligaris S.p.A. packages contain "Technical Details" of the Product in accordance with the Italian regulation D.L. 206 / 2005 of the Consumer's Code and nr. 101 of article "Rules for procedures" dated 08 February 1997.
This price list is made for illustrative purposes. Calligaris S.p.A. declines all responsibilities for finishes of employed materials that do not match perfectly these samples. Characteristics and sizes of all articles can vary without notice and are not binding for Calligaris S.p.A..
The distinctive marks and trademarks contained in this price list are validly registered and are the sole property of Calligaris S.p.a..
The retailer is called to use the promotional and advertising material supplied by Calligaris S.p.a. in a proper manner, without damaging in any way the distinctive marks and trademarks contained therein.

**Calligaris S.p.A.**

Via Trieste, 12
33044 Manzano (Udine) Italy
Tel. +39 0432 748 211
calligaris@calligaris.it

Calligaris USA Inc.

P.O. Box 750 High Point, NC 27261
Phone +1 336 431 5500
highpoint@calligaris.it

Calligaris Japan Y.K.

Kobe Fashion Mart 6W-06
6-9 Koyochō-naka Higashinada-ku
Kobe 658-0032 Japan
Phone +81 078 854 6120
info@calligaris.co.jp

Calligaris France S.à.r.l.

45, Rue du Bac
75007 Paris, France
export.fr@calligaris.it

Calligaris Retail Limited

177-178 Tottenham Court Road
W1T 7NY, London
United Kingdom
export.uk@calligaris.it

Calligaris Germany GmbH

Lenbachplatz, 6
80333 München
export.betrieb@calligaris.it

Calligaris S.p.A.

Representative Office
Business Center «Silver Stone»
Proezd Serebryakova, 14, Bldg. 15,
3Rd Floor, Office 328
129343, Moscow, Russia
export.csi@calligaris.it

calligaris.com

**ITALIAN INTERIORS,
SINCE 1923**

CAMPIONE PROMOZIONALE GRATUITO NON DESTINATO ALLA VENDITA - ESCLUSO IVA ART.2 COMMA 3 LETTERA C DPR 633/72 - ESONERATO DALLA BOLLA DI ACCOMPAGNAMENTO ART.4 PUNTO 6 DPR 62/78 - FREE PROMOTIONAL SAMPLE - VAT NOT INCLUDED ART.2 PAR.3 LETTER C DPR 633/72 - NO TRANSPORT DOCUMENTS REQUIRED ART.4 ITEM 6 ART 62/78 | PRINT / STAMPA 06/2023
COPYRIGHT © CALLIGARIS S.P.A. TUTTI I DIRITTI RISERVATI - ALL RIGHTS RESERVED

