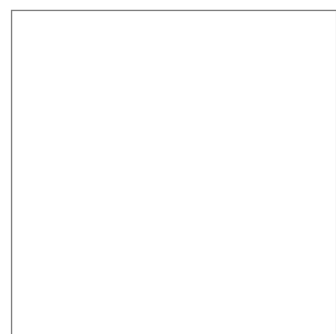
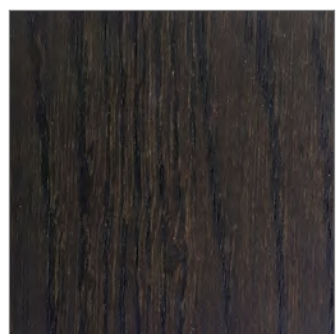


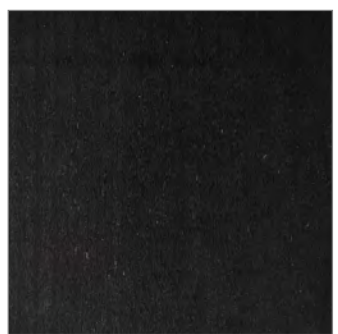
FRAME



MATT OPTIC WHITE WOOD



WENGE WOOD



GRAPHITE WOOD



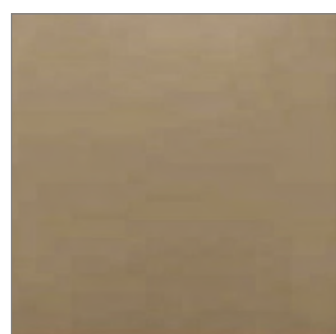
WALNUT WOOD



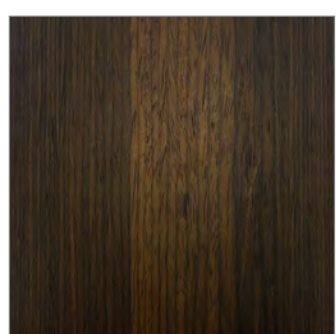
MATT GREY WOOD



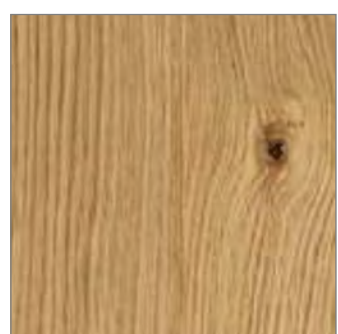
MATT TAUPE WOOD



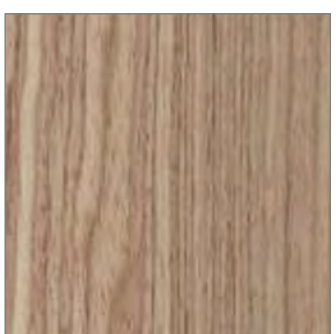
MATT NOUGAT WOOD



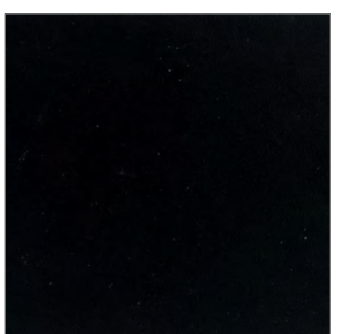
SMOKE WOOD



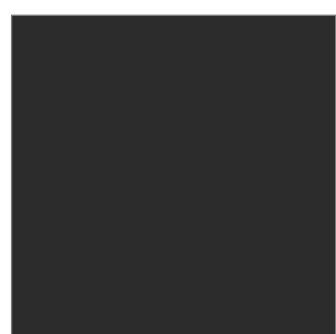
NATURAL OAK WOOD



NATURAL WOOD



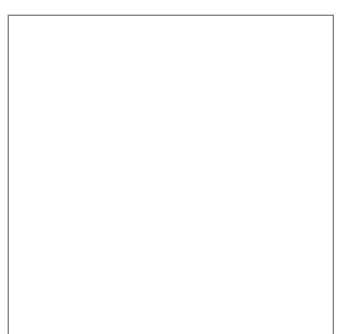
MATT BLACK WOOD



MATT GREY METAL



MATT BLACK METAL



MATT OPTIC WHITE METAL



MATT SKY BLUE METAL



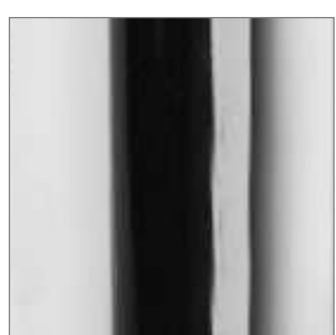
MATT MUSTARD YELLOW METAL



MATT TAUPE METAL



SATIN FINISHED STEEL METAL



CHROMED METAL



MATT COFFEE METAL



MATT NOUGAT METAL



BRUSHED METAL

SKUBA LEATHER - faux leather without a grain



BLACK



GREY



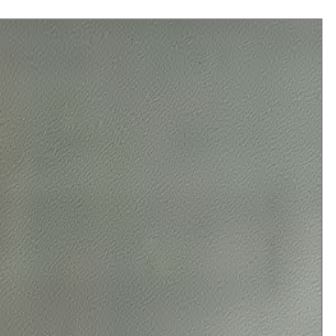
OPTIC WHITE



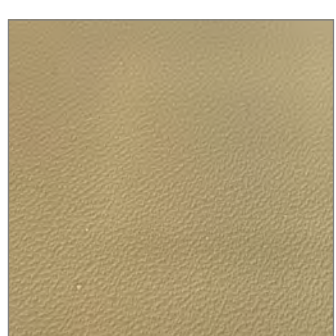
SKY BLUE



MUSTARD YELLOW



TAUPE



NOUGAT



COFFEE

VINTAGE LEATHER - faux leather with a deliberately aged look



DESERT



EBONY

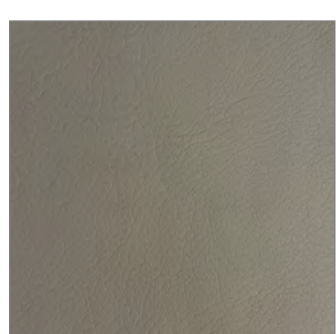


TOBACCO

EKOS LEATHER- faux leather with a grain



GREY



TAUPE

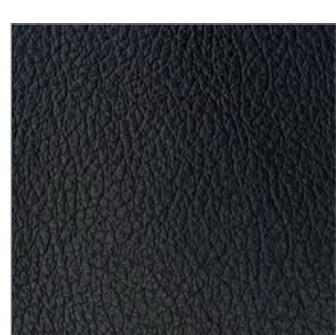


WHITE



BLACK

REAL LEATHER



BLACK



OPTIC WHITE



TAUPE



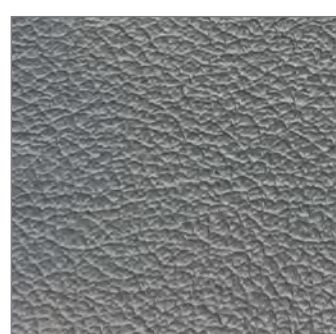
ANTELOPE BROWN



OLIVE GREEN



ARCTIC BLUE

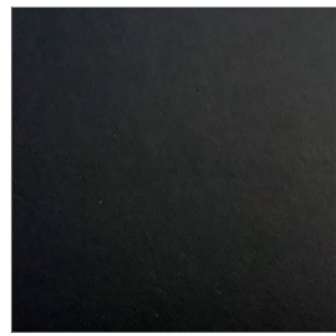


GREY

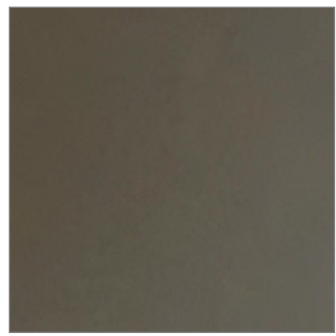


COFFEE

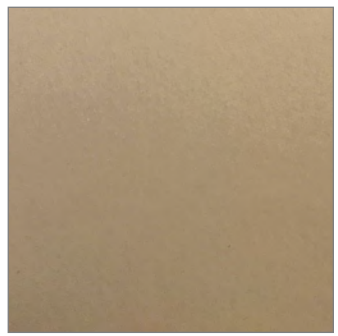
HIDE LEATHER - A thick leather with a smooth, matt finish



BLACK



TAUPE



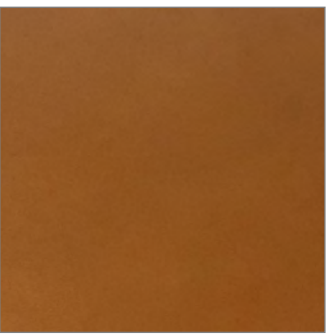
NATURAL



MUD BROWN

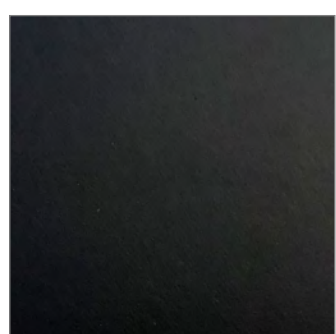


BURGUNDY

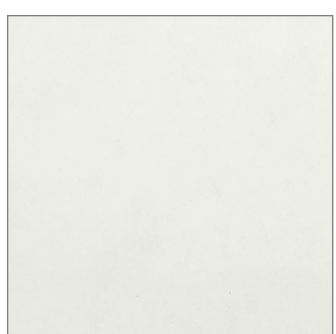


MELANGE COGNAC

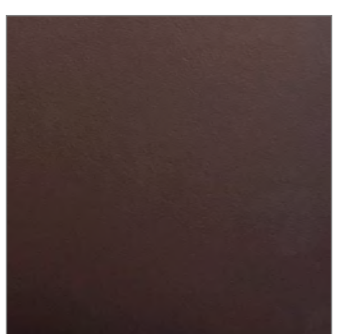
REGENERATED HIDE LEATHER - A combination of Hide leather and other natural materials with a smooth, matt finish.



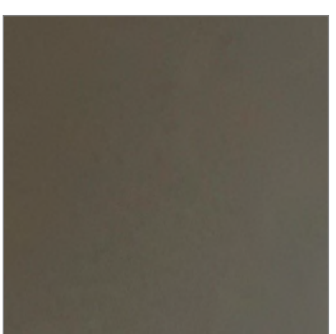
BLACK



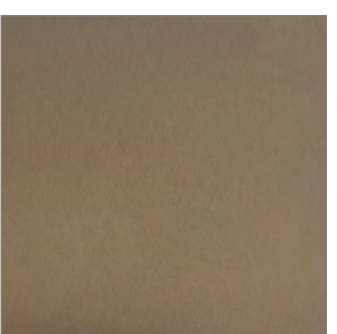
OPTIC WHITE



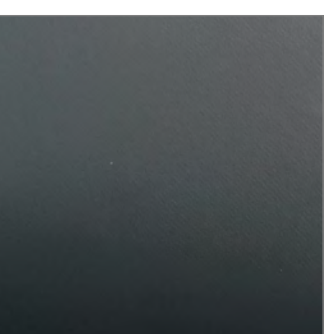
COFFEE



TAUPE



NOUGAT

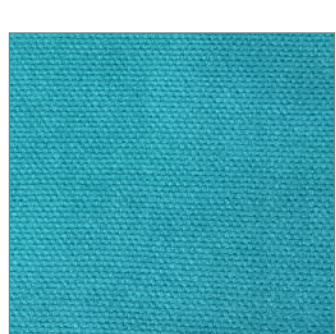


GREY

FABRICS



OSLO SMOKE GREY



OSLO AQUAMARINE



OSLO BLUE



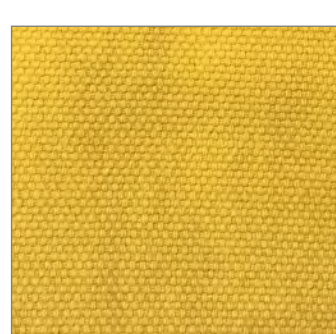
OSLO AUBERGINE



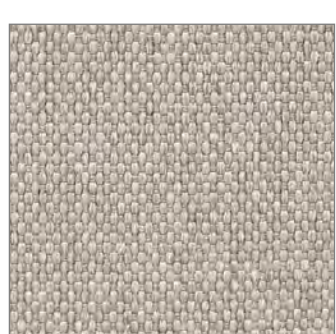
OSLO RED



OSLO OLIVE GREEN



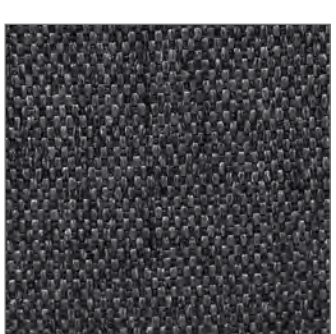
OSLO MUSTARD YELLOW



BERNA SAND



BERNA TAUPE



BERNA SMOKE GREY



VENICE VELVET SAND



VENICE VELVET SOIL BROWN



VENICE VELVET FOREST GREEN



VENICE VELVET OCEAN BLUE



VENICE VELVET BRICK RED



VENICE VELVET ASH GREY