

Finishes and colours

Refer to the pages inside the price list to check what finishes are available for each item.
Printed samples used to illustrate finishes and colours may not represent the true colour, they are given as a rough guide only and may not match the product actually sold.
Refer to the colour samples.

FOIL-WRAPPED EXTERIOR FINISHES

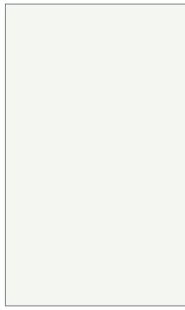
BASIC

OPEN-PORE FINISHES

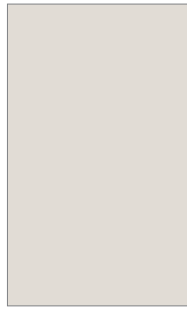


28 OLMO SHADE

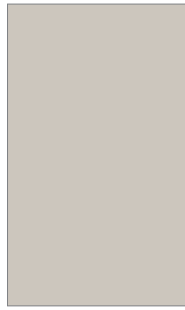
PLAIN FINISHES



01 BIANCO



50 NUVOLA



3C CANAPA

SMART

OPEN-PORE FINISHES



57 CALCE



54 NOCE NATURALE

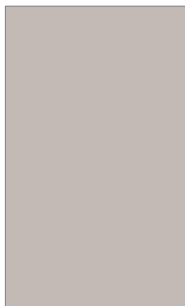


10 OLMO NORDICO



11 OLMO TABACCO

PLAIN FINISHES



20 CASHMERE



55 SABBIA



52 BASALTO



16 LAVAGNA



25 CEMENTO

Finishes and colours

Refer to the pages inside the price list to check what finishes are available for each item.

Printed samples used to illustrate finishes and colours may not represent the true colour, they are given as a rough guide only and may not match the product actually sold. Refer to the colour samples.

MIRRORED EXTERIOR FINISH



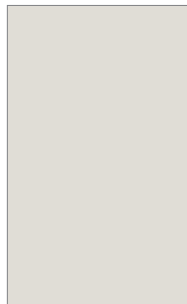
SP LIGHT
MIRROR



SR TINTED
MIRROR

FOIL-WRAPPED INTERIOR FINISH

PLAIN FINISH



50 NUVOLA

USE AND CARE INSTRUCTIONS

Please find below some useful tips on how to care for the product and keep it looking its best.

HOW TO CLEAN SURFACES IN GENERAL

Use a soft cloth (moistened where necessary).

Do NOT, under any circumstances, use abrasive products, solvents, thinners, alcohol or corrosive products.

Do not leave wet cloths touching surfaces.

ELECTRICAL ACCESSORIES

All such accessories come with "CE" marking attesting to their compliance with EEC directives (EEC 72/23, EEC 89/336).

In addition, they meet Italian CEI electrical safety standards (CEI 34-21 and EN 60598.1).

Each pack comes with an assembly instruction sheet featuring the system's technical specifications and essential installation procedure, which is to be carried out, whatever the case, by qualified personnel only.

CHANGES IN SHADE AND COLOUR

Colours can be susceptible to colour change over time and hence, when ordering new pieces to match existing units, any difference in colour shall not constitute cause for complaint.

It is also advisable to position furniture away from strong sources of heat and out of direct sunlight.

HOW TO CLEAN GLASS AND MIRRORS

Use a soft cloth and glass cleaner.

Do NOT, under any circumstances, use abrasive products, solvents, thinners, alcohol or corrosive products.

Fabrics

Category 1

CHARLIE fabric



TC06



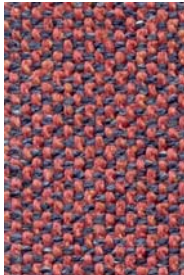
TC12



TC25



TC39

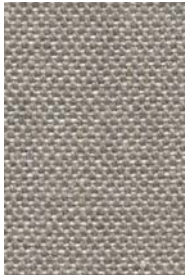


TC43

MAIA fabric



TM06



TM08



TM10



TM13



TM15



TM16



TM17



TM23



TM28



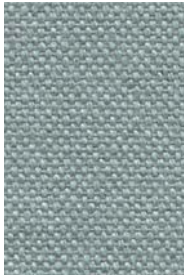
TM30



TM40



TM42

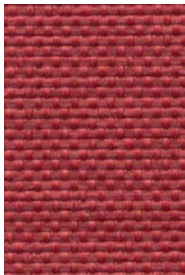


TM45

TEX fabric



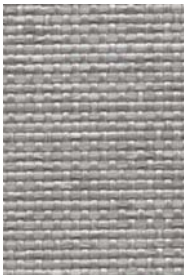
TT01



TT03



TT06



TT10



TT12



TT16



TT17



TT18



TT30

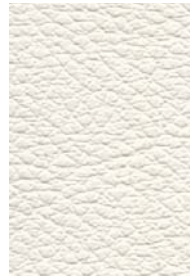
SLIM imitation leather



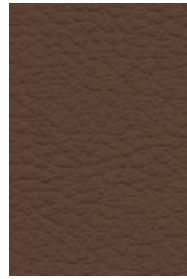
TS01



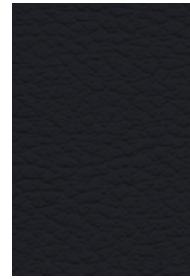
TS06



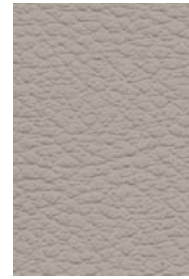
TS07



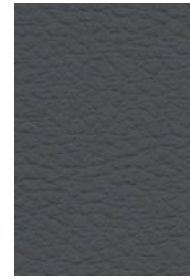
TS09



TS11



TS17



TS18



TS20



TS25



TS34



TS39



TS40



TS41